

ZNF263 RABBIT PAB

Cat.#: S218240

Product Name: Anti-ZNF263 Rabbit Polyclonal Antibody

Synonyms: FPM315; ZSCAN44; ZKSCAN12

UNIPROT ID: O14978 (Gene Accession - BC008805)

Background: ZNF263 (Zinc finger protein 263), also known as FPM315 or ZKSCAN12 (Zinc finger protein with KRAB and SCAN domains 12), is a 683 amino acid nuclear protein that contains nine C2H2-type zinc fingers, one KRAB domain and one SCAN box domain. ZNF263 acts as a transcriptional repressor in the nucleus and is expressed in various tissues including heart, brain, placenta, lung, liver, skeletal muscle, kidney, pancreas, spleen, thymus, prostate, testis, ovary, small intestine, colon and leukocyte.

Immunogen: Fusion protein of human ZNF263

Applications: ELISA, WB, IHC

Recommended Dilutions: IHC: 25-100;WB: 500-2000;ELISA: 5000-10000

Host Species: Rabbit

Clonality: Rabbit Polyclonal

Isotype: Immunogen-specific rabbit IgG

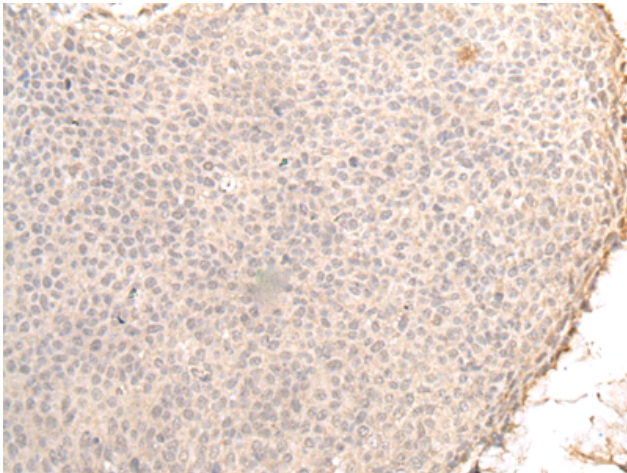
Purification: Antigen affinity purification

Species Reactivity: Human

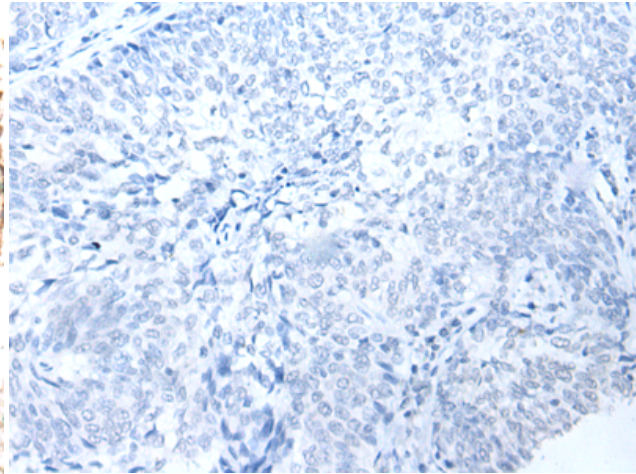
Constituents: PBS (without Mg²⁺ and Ca²⁺), pH 7.4, 150 mM NaCl, 0.05% Sodium Azide and 40% glycerol

Research Areas: Epigenetics and Nuclear Signaling

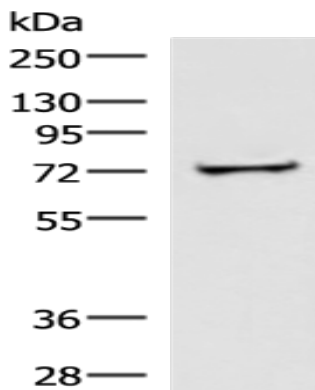
Storage & Shipping: Store at -20°C. Avoid repeated freezing and thawing



Immunohistochemistry analysis of paraffin embedded Human cervical cancer tissue using 218240(ZNF263 Antibody) at a dilution of 1/30(Cytoplasm and Nucleus).



In comparison with the IHC on the left, the same paraffin-embedded Human cervical cancer tissue is first treated with the fusion protein and then with 218240(Anti-ZNF263 Antibody) at dilution 1/30.



Gel: 6%SDS-PAGE, Lysate: 60 μ g;
Lane: Human liver tissue lysate;
Primary antibody: 218240(ZNF263 Antibody) at dilution 1/500;
Secondary antibody: HRP-conjugated Goat anti rabbit IgG at 1/5000 dilution;
Exposure time: 7 seconds