

ZNF213 RABBIT PAB

Cat.#: S218236

Product Name: Anti-ZNF213 Rabbit Polyclonal Antibody

Synonyms: CR53; ZSCAN53; ZKSCAN21

UNIPROT ID: O14771 (Gene Accession - BC007287)

Background: C2H2 zinc finger proteins, such as ZNF213, have bipartite structures in which one domain binds DNA or RNA and the other modulates target gene expression.[supplied by OMIM, Apr 2004]

Immunogen: Fusion protein of human ZNF213

Applications: ELISA, IHC

Recommended Dilutions: IHC: 100-300; ELISA: 5000-10000

Host Species: Rabbit

Clonality: Rabbit Polyclonal

Isotype: Immunogen-specific rabbit IgG

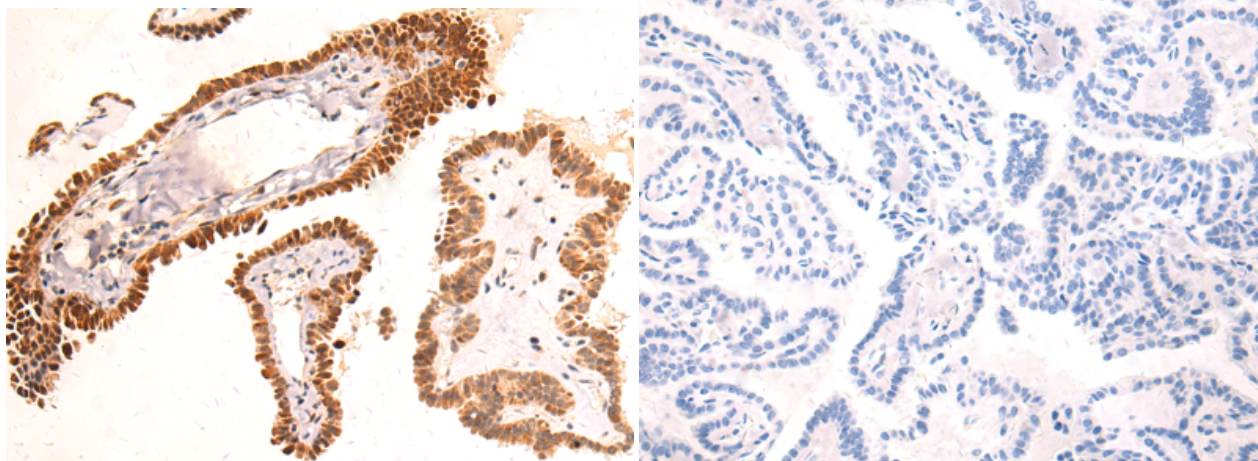
Purification: Antigen affinity purification

Species Reactivity: Human

Constituents: PBS (without Mg²⁺ and Ca²⁺), pH 7.4, 150 mM NaCl, 0.05% Sodium Azide and 40% glycerol

Research Areas: Epigenetics and Nuclear Signaling

Storage & Shipping: Store at -20°C. Avoid repeated freezing and thawing



Immunohistochemistry analysis of paraffin embedded Human thyroid cancer tissue using 218236(ZNF213 Antibody) at a dilution of 1/125(Nucleus).

In comparison with the IHC on the left, the same paraffin-embedded Human thyroid cancer tissue is first treated with the fusion protein and then with 218236(Anti-ZNF213 Antibody) at dilution 1/125.