

ZNF200 RABBIT PAB

Cat.#: S214928

Product Name: Anti-ZNF200 Rabbit Polyclonal Antibody

Synonyms:

UNIPROT ID: P98182 (Gene Accession - NP_003445)

Background: Could have a role in spermatogenesis.

Immunogen: Synthetic peptide of human ZNF200

Applications: ELISA, IHC

Recommended Dilutions: IHC: 25-100; ELISA: 2000-5000

Host Species: Rabbit

Clonality: Rabbit Polyclonal

Isotype: Immunogen-specific rabbit IgG

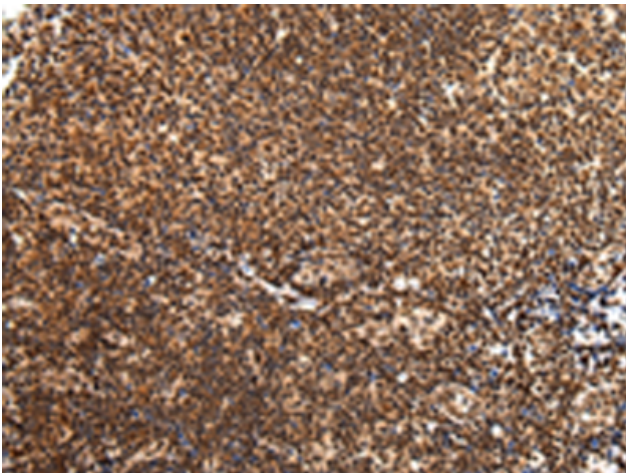
Purification: Antigen affinity purification

Species Reactivity: Human

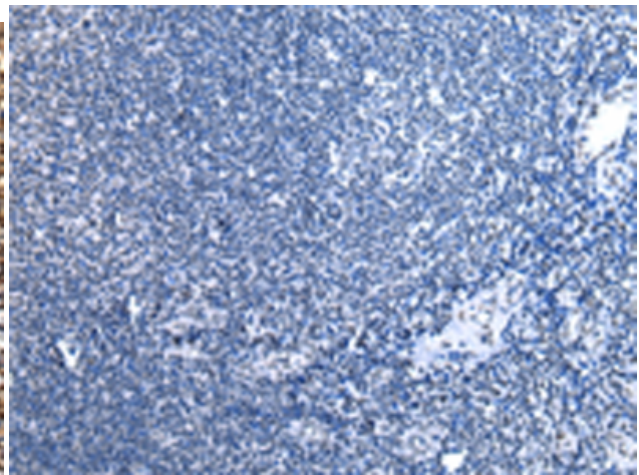
Constituents: PBS (without Mg²⁺ and Ca²⁺), pH 7.4, 150 mM NaCl, 0.05% Sodium Azide and 40% glycerol

Research Areas: Epigenetics and Nuclear Signaling

Storage & Shipping: Store at -20°C. Avoid repeated freezing and thawing



Immunohistochemistry analysis of paraffin embedded Human tonsil tissue using 214928(ZNF200 Antibody) at a dilution of 1/30(Cytoplasm and Nucleus).



In comparison with the IHC on the left, the same paraffin-embedded Human tonsil tissue is first treated with the synthetic peptide and then with 214928(Anti-ZNF200 Antibody) at dilution 1/30.