

## ZNF184 RABBIT PAB

**Cat.#:** S219523

**Product Name:** Anti-ZNF184 Rabbit Polyclonal Antibody

**Synonyms:** kr-ZNF3

**UNIPROT ID:** Q99676 (Gene Accession - BC022992 )

**Background:** The protein encoded by this gene is predicted to be a Kruppel C2H2-type zinc-finger protein family member. Sequence analysis predicts that the protein contains two Kruppel associated box (KRAB) boxes in the N-terminus and highly conserved zinc finger motifs at the C-terminus. Alternative splicing results in multiple transcript variants.

**Immunogen:** Fusion protein of human ZNF184

**Applications:** ELISA, WB, IHC

**Recommended Dilutions:** IHC: 100-300;WB: 1000-5000;ELISA: 5000-10000

**Host Species:** Rabbit

**Clonality:** Rabbit Polyclonal

**Isotype:** Immunogen-specific rabbit IgG

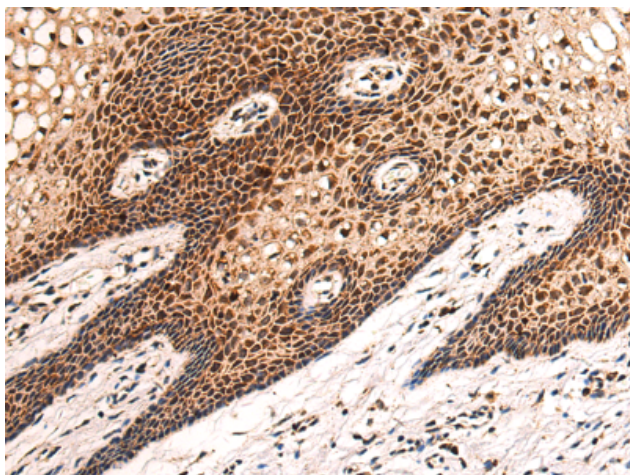
**Purification:** Antigen affinity purification

**Species Reactivity:** Human, Rat

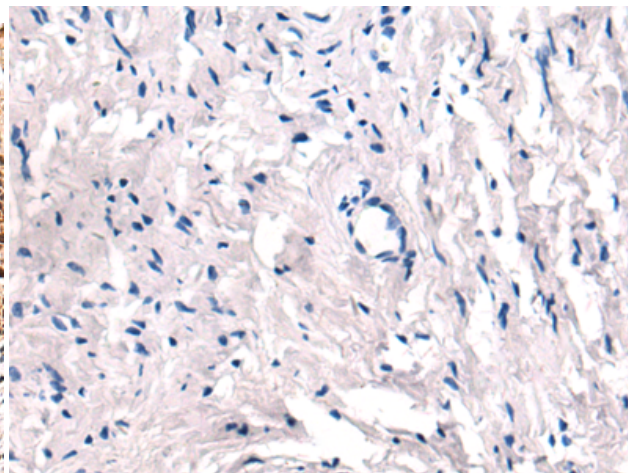
**Constituents:** PBS (without Mg<sup>2+</sup> and Ca<sup>2+</sup>), pH 7.4, 150 mM NaCl, 0.05% Sodium Azide and 40% glycerol

**Research Areas:** Epigenetics and Nuclear Signaling

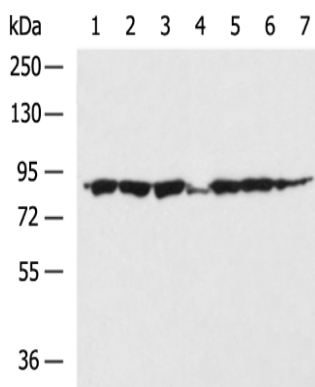
**Storage & Shipping:** Store at -20°C. Avoid repeated freezing and thawing



Immunohistochemistry analysis of paraffin embedded Human cervical cancer tissue using 219523(ZNF184 Antibody) at a dilution of 1/105(Nucleus).



In comparison with the IHC on the left, the same paraffin-embedded Human cervical cancer tissue is first treated with the fusion protein and then with 219523(Anti-ZNF184 Antibody) at dilution 1/105.



Gel: 6%SDS-PAGE, Lysate: 40 µg;  
 Lane 1-7: RAMOS, Raji, A375 cell, Rat liver tissue, LO2, 293T, Jurkat cell lysates;  
 Primary antibody: 219523(ZNF184 Antibody) at dilution 1/1000;  
 Secondary antibody: HRP-conjugated Goat anti rabbit IgG at 1/5000 dilution;  
 Exposure time: 2 minutes