

## ZNF169 RABBIT PAB

**Cat.#:** S219598

**Product Name:** Anti-ZNF169 Rabbit Polyclonal Antibody

**Synonyms:**

**UNIPROT ID:** Q14929 (Gene Accession - BC047702 )

**Background:** Predicted to enable DNA-binding transcription repressor activity, RNA polymerase II-specific and RNA polymerase II transcription regulatory region sequence-specific DNA binding activity. Predicted to be involved in negative regulation of transcription by RNA polymerase II. Predicted to be located in nucleus.

**Immunogen:** Fusion protein of human ZNF169

**Applications:** ELISA, IHC

**Recommended Dilutions:** IHC: 50-200; ELISA: 5000-10000

**Host Species:** Rabbit

**Clonality:** Rabbit Polyclonal

**Isotype:** Immunogen-specific rabbit IgG

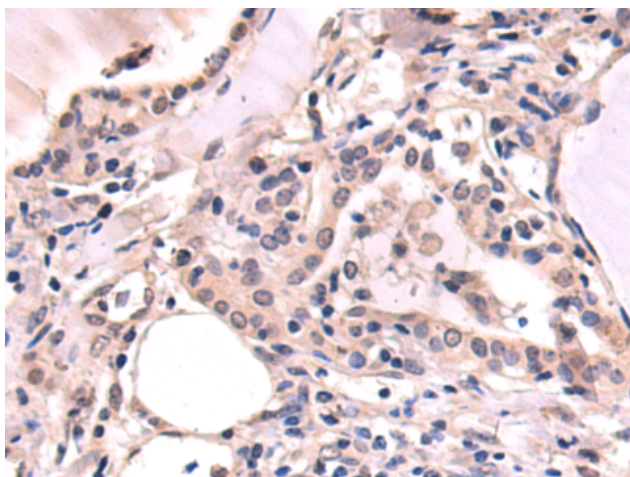
**Purification:** Antigen affinity purification

**Species Reactivity:** Human

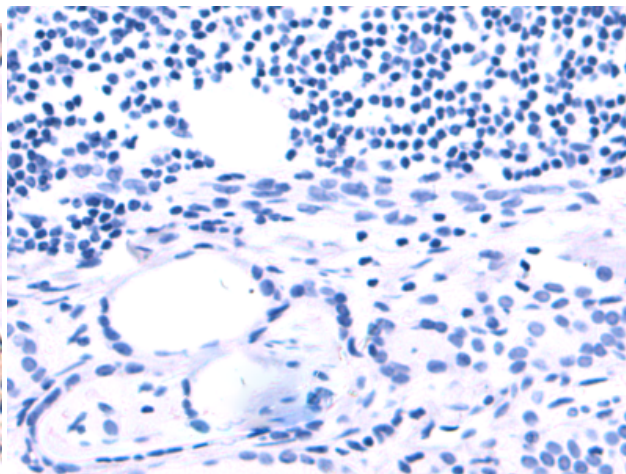
**Constituents:** PBS (without Mg<sup>2+</sup> and Ca<sup>2+</sup>), pH 7.4, 150 mM NaCl, 0.05% Sodium Azide and 40% glycerol

**Research Areas:** Epigenetics and Nuclear Signaling

**Storage & Shipping:** Store at -20°C. Avoid repeated freezing and thawing



Immunohistochemistry analysis of paraffin embedded Human thyroid cancer tissue using 219598(ZNF169 Antibody) at a dilution of 1/80(Cytoplasm and Nucleus).



In comparison with the IHC on the left, the same paraffin-embedded Human thyroid cancer tissue is first treated with the fusion protein and then with 219598(Anti-ZNF169 Antibody) at dilution 1/80.