

ZNF143 RABBIT PAB

Cat.#: S221515

Product Name: Anti-ZNF143 Rabbit Polyclonal Antibody

Synonyms: SBF; STAF; pHZ-1

UNIPROT ID: P52747 (Gene Accession - NP_003433)

Background: Enables DNA-binding transcription activator activity, RNA polymerase II-specific and RNA polymerase II cis-regulatory region sequence-specific DNA binding activity. Involved in positive regulation of snRNA transcription by RNA polymerase II. Predicted to be located in nucleoplasm. [provided by Alliance of Genome Resources, Apr 2022]

Immunogen: Synthetic peptide of human ZNF143

Applications: ELISA, IHC

Recommended Dilutions: IHC: 50-200; ELISA: 5000-10000

Host Species: Rabbit

Clonality: Rabbit Polyclonal

Isotype: Immunogen-specific rabbit IgG

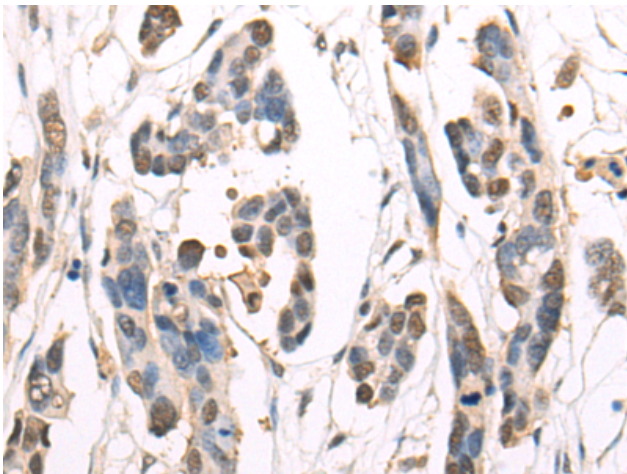
Purification: Antigen affinity purification

Species Reactivity: Human, Mouse, Rat

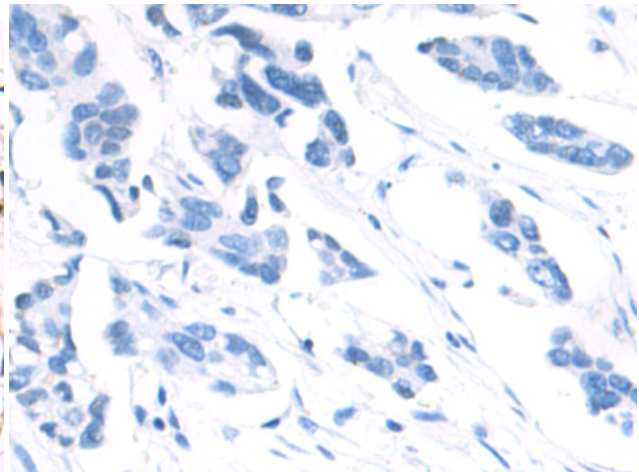
Constituents: PBS (without Mg²⁺ and Ca²⁺), pH 7.4, 150 mM NaCl, 0.05% Sodium Azide and 40% glycerol

Research Areas: Epigenetics and Nuclear Signaling

Storage & Shipping: Store at -20°C. Avoid repeated freezing and thawing



Immunohistochemistry analysis of paraffin embedded Human colorectal cancer tissue using 221515(ZNF143 Antibody) at a dilution of 1/50(Nucleus).



In comparison with the IHC on the left, the same paraffin-embedded Human colorectal cancer tissue is first treated with the synthetic peptide and then with 221515(Anti-ZNF143 Antibody) at dilution 1/50.