

ZIC5 ? RABBIT PAB

Cat.#: S213328

Product Name: Anti-ZIC5 Rabbit Polyclonal Antibody

Synonyms:

UNIPROT ID: Q96T25 (Gene Accession - NP_149123)

Background: This gene encodes a member of the ZIC family of C2H2-type zinc finger proteins. Members of this family are important during development, and have been associated X-linked visceral heterotaxy and holoprosencephaly type 5. This gene is closely linked to a gene encoding zinc finger protein of the cerebellum 2, a related family member on chromosome 13.

Immunogen: Synthetic peptide of human ZIC5

Applications: ELISA, IHC

Recommended Dilutions: IHC: 100-300; ELISA: 2000-5000

Host Species: Rabbit

Clonality: Rabbit Polyclonal

Isotype: Immunogen-specific rabbit IgG

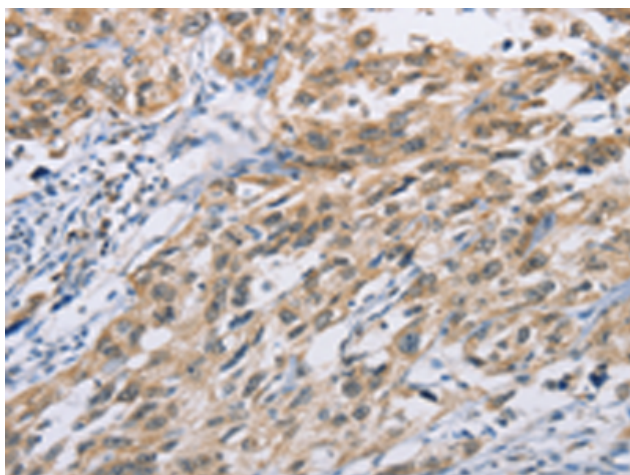
Purification: Antigen affinity purification

Species Reactivity: Human, Mouse

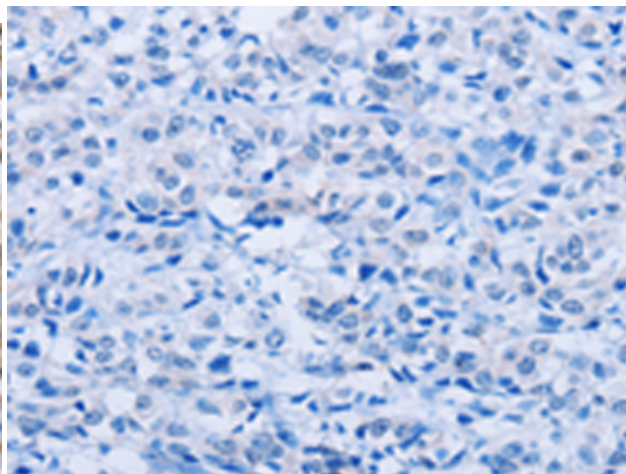
Constituents: PBS (without Mg²⁺ and Ca²⁺), pH 7.4, 150 mM NaCl, 0.05% Sodium Azide and 40% glycerol

Research Areas: Epigenetics and Nuclear Signaling, Neuroscience

Storage & Shipping: Store at -20°C. Avoid repeated freezing and thawing



Immunohistochemistry analysis of paraffin embedded Human esophagus cancer tissue using 213328(ZIC5 Antibody) at a dilution of 1/100(Nucleus).



In comparison with the IHC on the left, the same paraffin-embedded Human esophagus cancer tissue is first treated with the synthetic peptide and then with 213328(Anti-ZIC5 Antibody) at dilution 1/100.