

## ZIC3 ? RABBIT PAB

**Cat.#:** S213327

**Product Name:** Anti-ZIC3 Rabbit Polyclonal Antibody

**Synonyms:** HTX; HTX1; ZNF203; VACTERLX

**UNIPROT ID:** O60481 (Gene Accession - NP\_003404 )

**Background:** This gene encodes a member of the ZIC family of C2H2-type zinc finger proteins. This nuclear protein probably functions as a transcription factor in early stages of left-right body axis formation. Mutations in this gene cause X-linked visceral heterotaxy, which includes congenital heart disease and left-right axis defects in organs.

**Immunogen:** Synthetic peptide of human ZIC3

**Applications:** ELISA, WB, IHC

**Recommended Dilutions:** IHC: 100-300;WB: 200-1000;ELISA: 1000-2000

**Host Species:** Rabbit

**Clonality:** Rabbit Polyclonal

**Isotype:** Immunogen-specific rabbit IgG

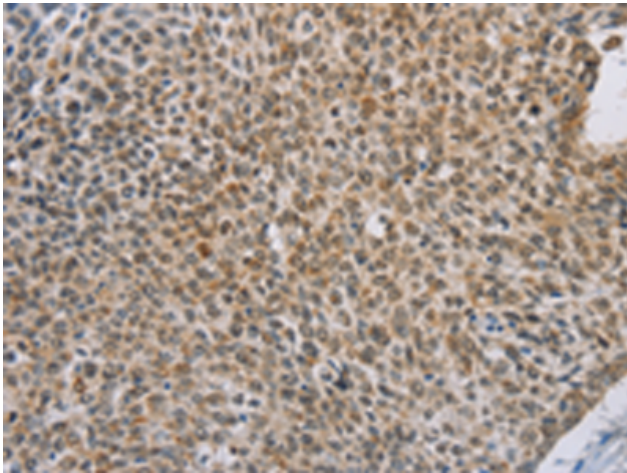
**Purification:** Antigen affinity purification

**Species Reactivity:** Human, Mouse

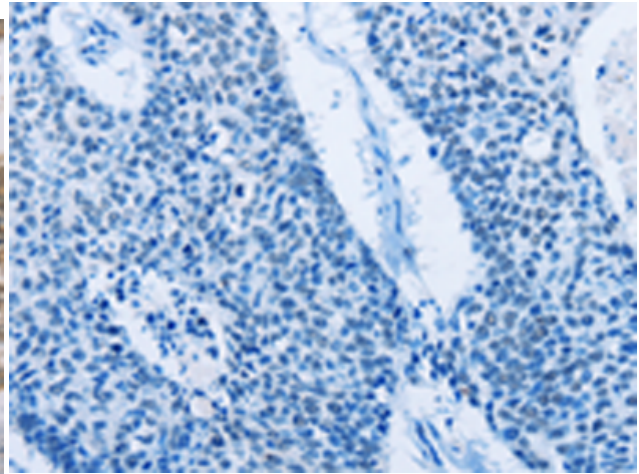
**Constituents:** PBS (without Mg<sup>2+</sup> and Ca<sup>2+</sup>), pH 7.4, 150 mM NaCl, 0.05% Sodium Azide and 40% glycerol

**Research Areas:** Epigenetics and Nuclear Signaling, Stem Cells, Developmental Biology

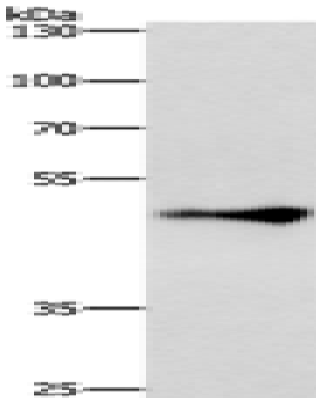
**Storage & Shipping:** Store at -20°C. Avoid repeated freezing and thawing



Immunohistochemistry analysis of paraffin embedded Human lung cancer tissue using 213327(ZIC3 Antibody) at a dilution of 1/100(Nucleus).



In comparison with the IHC on the left, the same paraffin-embedded Human lung cancer tissue is first treated with the synthetic peptide and then with 213327(Anti-ZIC3 Antibody) at dilution 1/100.



Gel: 8%SDS-PAGE, Lysate: 40 µg;  
Lane: HepG2 cells;  
Primary antibody: 213327(ZIC3 Antibody) at dilution 1/500;  
Secondary antibody: Goat anti rabbit IgG at 1/8000 dilution;  
Exposure time: 30 seconds