

## ZG16 RABBIT PAB

**Cat.#:** S212918

**Product Name:** Anti-ZG16 Rabbit Polyclonal Antibody

**Synonyms:** JCLN; JCLNI; ZG16A

**UNIPROT ID:** O60844 (Gene Accession - BC029149 )

**Background:** May play a role in protein trafficking. May act as a linker molecule between the submembranous matrix on the luminal side of zymogen granule membrane (ZGM) and aggregated secretory proteins during granule formation in the TGN.

**Immunogen:** Fusion protein of human ZG16

**Applications:** ELISA, WB, IHC

**Recommended Dilutions:** IHC: 100-300;WB: 1000-5000;ELISA: 5000-10000

**Host Species:** Rabbit

**Clonality:** Rabbit Polyclonal

**Isotype:** Immunogen-specific rabbit IgG

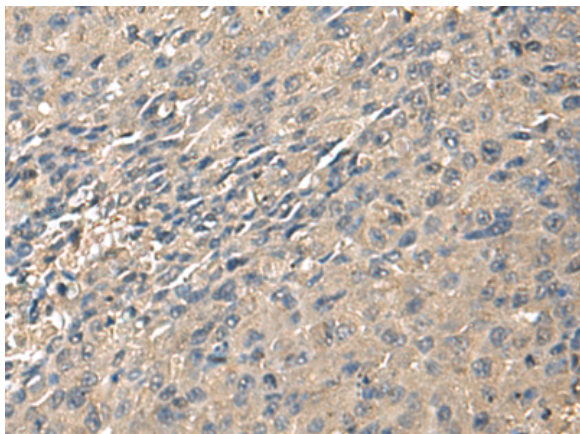
**Purification:** Antigen affinity purification

**Species Reactivity:** Human, Mouse

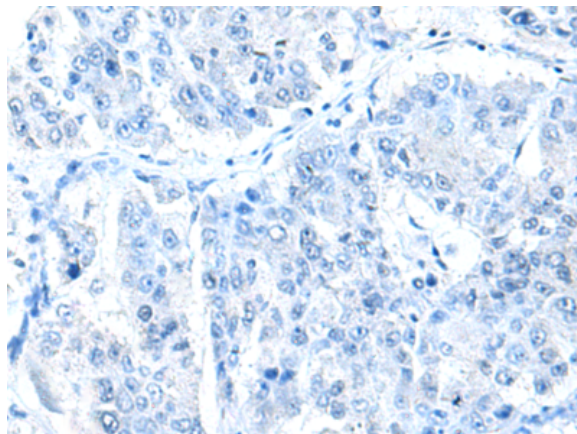
**Constituents:** PBS (without Mg<sup>2+</sup> and Ca<sup>2+</sup>), pH 7.4, 150 mM NaCl, 0.05% Sodium Azide and 40% glycerol

**Research Areas:** Signal Transduction

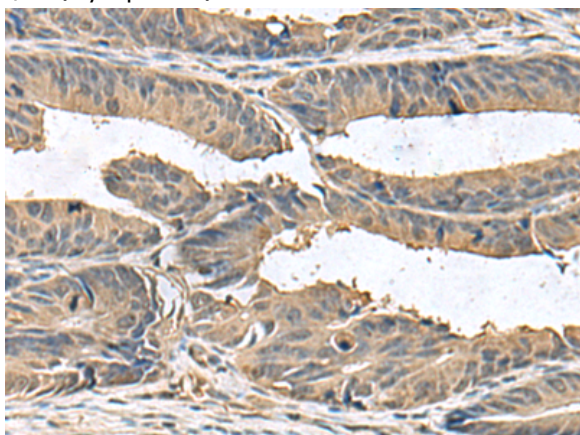
**Storage & Shipping:** Store at -20°C. Avoid repeated freezing and thawing



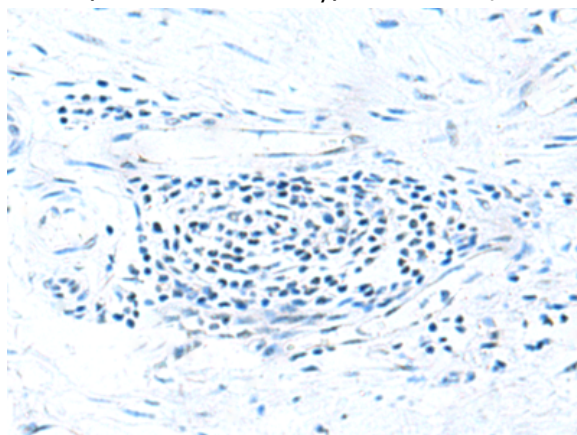
Immunohistochemistry analysis of paraffin embedded Human liver cancer tissue using 212918(ZG16 Antibody) at a dilution of 1/95(Cytoplasm).



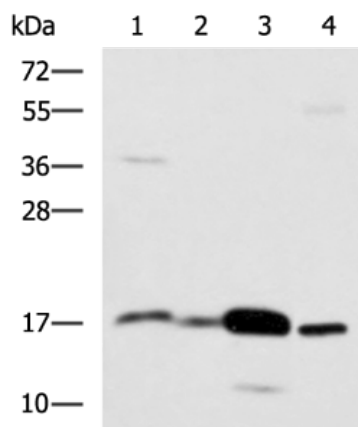
In comparison with the IHC on the left, the same paraffin-embedded Human liver cancer tissue is first treated with the fusion protein and then with 212918(Anti-ZG16 Antibody) at dilution 1/95.



The image on the left is immunohistochemistry of paraffin-embedded Human colorectal cancer tissue using 212918(Anti-ZG16 Antibody) at a dilution of 1/95.



In comparison with the IHC on the left, the same paraffin-embedded Human colorectal cancer tissue is first treated with fusion protein and then with D126078(Anti-ZG16 Antibody) at dilution 1/95.



Gel: 12%SDS-PAGE, Lysate: 40 µg;  
 Lane 1-4: Mouse Pancreas tissue, Mouse small intestines tissue, Mouse large intestine tissue, Human sigmoid tissue lysates;  
 Primary antibody: 212918(ZG16 Antibody) at dilution 1/1350;  
 Secondary antibody: HRP-conjugated Goat anti rabbit IgG at 1/5000 dilution;  
 Exposure time: 30 seconds



# Product Description

Pioneering GTPase and Oncogene Product Development since 2010

---