

ZFYVE19 ? RABBIT PAB

Cat.#: S213323

Product Name: Anti-ZFYVE19 Rabbit Polyclonal Antibody

Synonyms: MPFYVE

UNIPROT ID: Q96K21 (Gene Accession - NP_001070736)

Background: ZFYVE19 (zinc finger, FYVE domain containing 19), also known as MPFYVE (MLL partner containing FYVE domain), is a 471 amino acid protein that contains one FYVE-type zinc finger. Expressed in heart, brain, kidney, skeletal muscle and liver, ZFYVE19 may participate in transcriptional regulation events within the cell. Defects in the gene encoding ZFYVE19 are associated with acute myeloblastic leukemia (AML), a rapidly progressing cancer of the myeloid line of white blood cells that is characterized by fever, anemia, bone pain, shortness of breath and frequent infections. Three isoforms of ZFYVE19 exist due to alternative splicing events.

Immunogen: Synthetic peptide of human ZFYVE19

Applications: ELISA, WB, IHC

Recommended Dilutions: IHC: 50-200;WB: 500-2000;ELISA: 2000-5000

Host Species: Rabbit

Clonality: Rabbit Polyclonal

Isotype: Immunogen-specific rabbit IgG

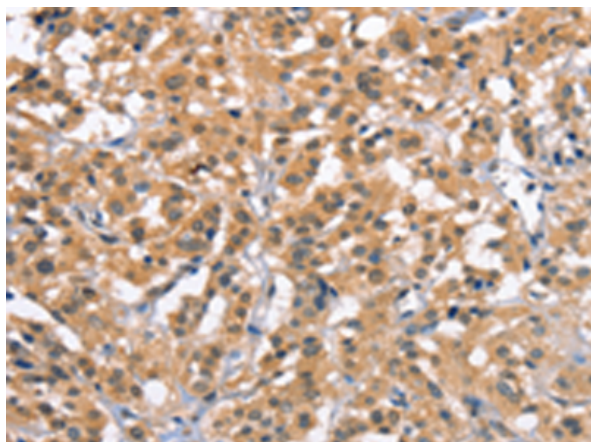
Purification: Antigen affinity purification

Species Reactivity: Human

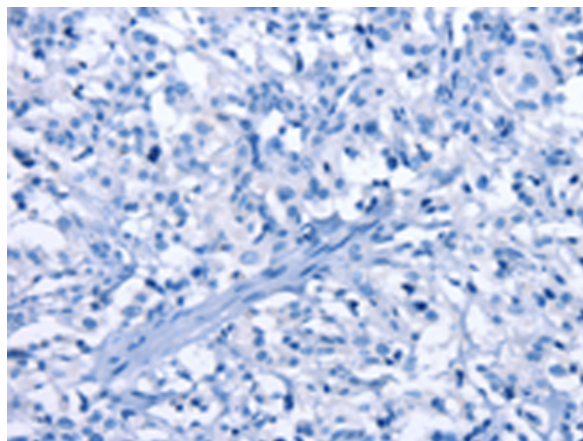
Constituents: PBS (without Mg²⁺ and Ca²⁺), pH 7.4, 150 mM NaCl, 0.05% Sodium Azide and 40% glycerol

Research Areas: Cell Biology

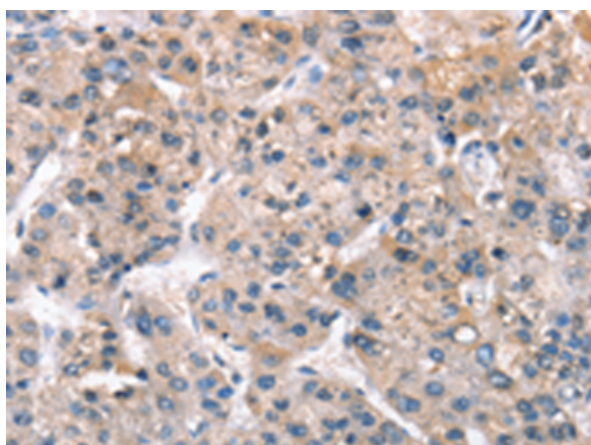
Storage & Shipping: Store at -20°C. Avoid repeated freezing and thawing



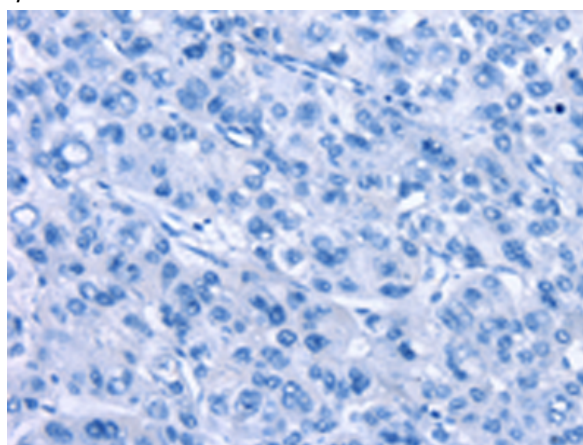
Immunohistochemistry analysis of paraffin embedded Human thyroid cancer tissue using 213323(ZFYVE19 Antibody) at a dilution of 1/61(Cytoplasm).



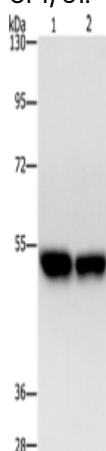
In comparison with the IHC on the left, the same paraffin-embedded Human thyroid cancer tissue is first treated with the synthetic peptide and then with 213323(Anti-ZFYVE19 Antibody) at dilution 1/61.



The image on the left is immunohistochemistry of paraffin-embedded Human liver cancer tissue using 213323(Anti-ZFYVE19 Antibody) at a dilution of 1/61.



In comparison with the IHC on the left, the same paraffin-embedded Human liver cancer tissue is first treated with synthetic peptide and then with D156029(Anti-ZFYVE19 Antibody) at dilution 1/61.



Gel: 8%SDS-PAGE, Lysate: 40 µg;
Lane 1-2: Hela cells, A431 cells;
Primary antibody: 213323(ZFYVE19 Antibody) at dilution 1/500;
Secondary antibody: Goat anti rabbit IgG at 1/8000 dilution;
Exposure time: 20 seconds



Product Description

Pioneering GTPase and Oncogene Product Development since 2010
