

## ZFP36L2 RABBIT PAB

**Cat.#:** S221026

**Product Name:** Anti-ZFP36L2 Rabbit Polyclonal Antibody

**Synonyms:** BRF2; ERF2; ERF-2; TIS11D; RNF162C

**UNIPROT ID:** P47974 (Gene Accession - NP\_008818 )

**Background:** This gene is a member of the TIS11 family of early response genes. Family members are induced by various agonists such as the phorbol ester TPA and the polypeptide mitogen EGF. The encoded protein contains a distinguishing putative zinc finger domain with a repeating cys-his motif. This putative nuclear transcription factor most likely functions in regulating the response to growth factors.

**Immunogen:** Synthetic peptide of human ZFP36L2

**Applications:** ELISA, IHC

**Recommended Dilutions:** IHC: 25-100; ELISA: 2000-5000

**Host Species:** Rabbit

**Clonality:** Rabbit Polyclonal

**Isotype:** Immunogen-specific rabbit IgG

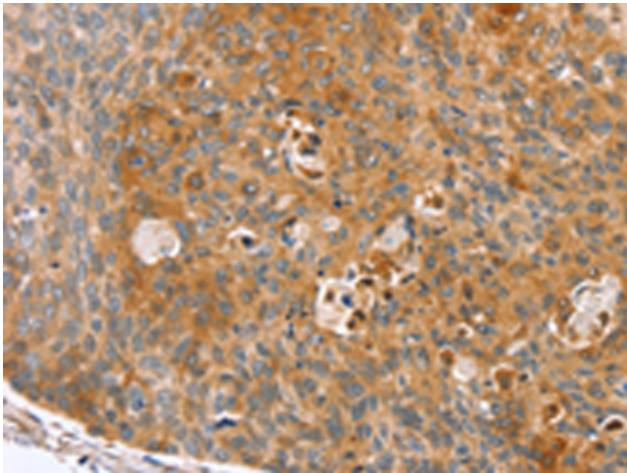
**Purification:** Antigen affinity purification

**Species Reactivity:** Human, Mouse

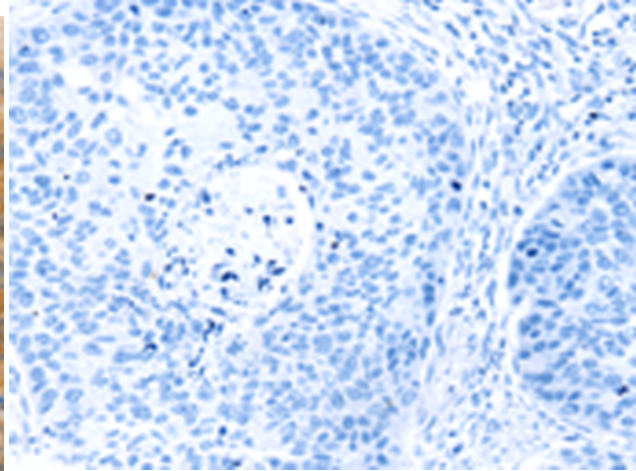
**Constituents:** PBS (without Mg<sup>2+</sup> and Ca<sup>2+</sup>), pH 7.4, 150 mM NaCl, 0.05% Sodium Azide and 40% glycerol

**Research Areas:** Epigenetics and Nuclear Signaling, Cancer

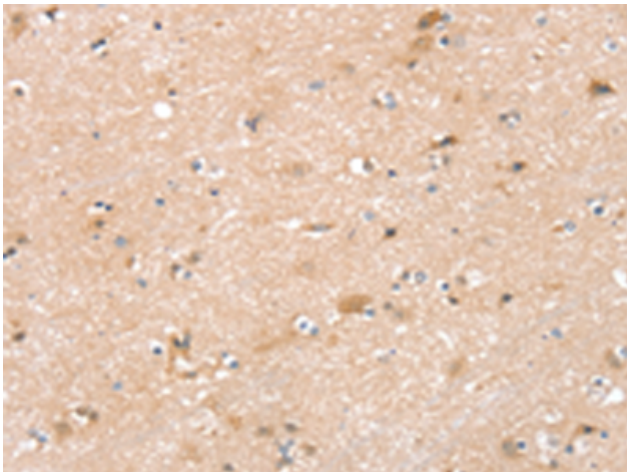
**Storage & Shipping:** Store at -20°C. Avoid repeated freezing and thawing



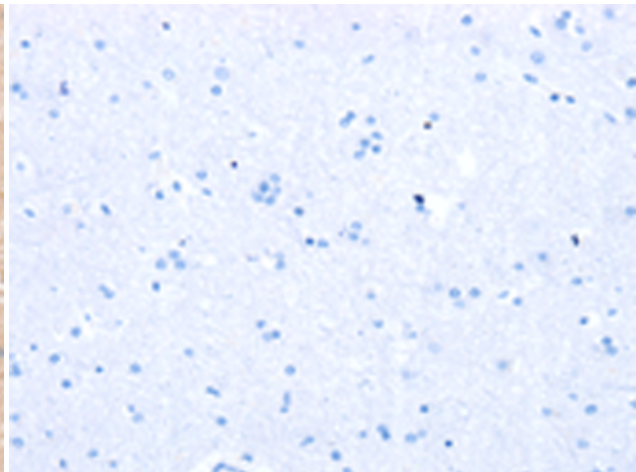
Immunohistochemistry analysis of paraffin embedded Human esophagus cancer tissue using 221026(ZFP36L2 Antibody) at a dilution of 1/45(Cytoplasm and Cell membrane ).



In comparison with the IHC on the left, the same paraffin-embedded Human esophagus cancer tissue is first treated with the synthetic peptide and then with 221026(Anti-ZFP36L2 Antibody) at dilution 1/45.



The image on the left is immunohistochemistry of paraffin-embedded Human brain tissue using 221026(Anti-ZFP36L2 Antibody) at a dilution of 1/45.



In comparison with the IHC on the left, the same paraffin-embedded Human brain tissue is first treated with synthetic peptide and then with D262372(Anti-ZFP36L2 Antibody) at dilution 1/45.