

## ZFP30 RABBIT PAB

**Cat.#:** S221155

**Product Name:** Anti-ZFP30 Rabbit Polyclonal Antibody

**Synonyms:** ZNF745

**UNIPROT ID:** Q9Y2G7 (Gene Accession - NP\_055713 )

**Background:** ZFP30 (zinc finger protein 30 homolog) is a 519 amino acid protein that localizes to the nucleus and is composed of thirteen C2H2-type zinc fingers and one KRAB domain. ZFP30 is encoded by a gene located on human chromosome 19, which consists of over 63 million bases, houses approximately 1,400 genes and is recognized for having the greatest gene density of the human chromosomes. It is the genetic home for a number of immunoglobulin (Ig) superfamily members, including the killer cell and leukocyte Ig-like receptors, a number of ICAMs, the CEACAM and PSG families, and Fc receptors (FcRs).

**Immunogen:** Synthetic peptide of human ZFP30

**Applications:** ELISA, IHC

**Recommended Dilutions:** IHC: 25-100; ELISA: 2000-5000

**Host Species:** Rabbit

**Clonality:** Rabbit Polyclonal

**Isotype:** Immunogen-specific rabbit IgG

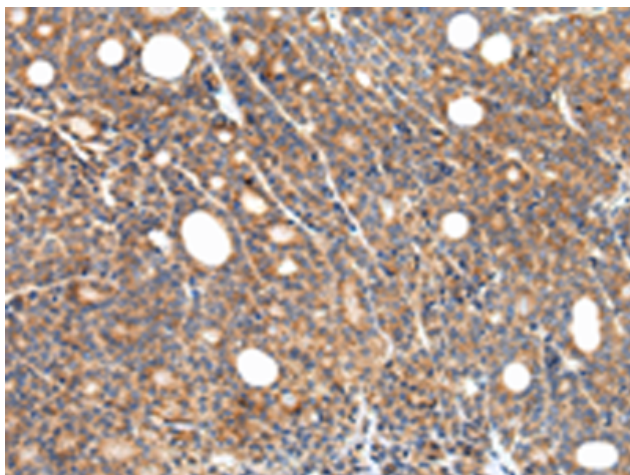
**Purification:** Antigen affinity purification

**Species Reactivity:** Human

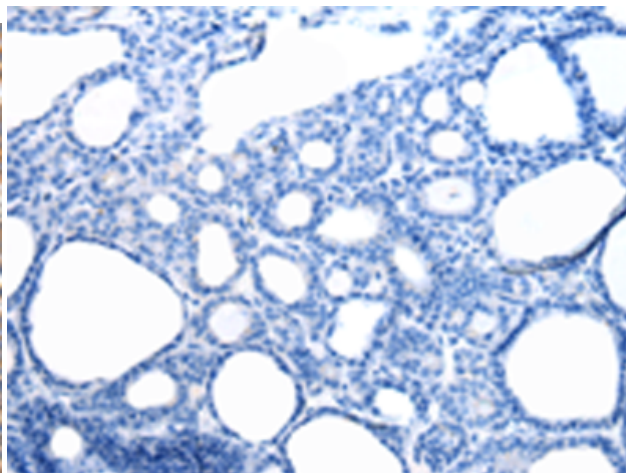
**Constituents:** PBS (without Mg<sup>2+</sup> and Ca<sup>2+</sup>), pH 7.4, 150 mM NaCl, 0.05% Sodium Azide and 40% glycerol

**Research Areas:** Epigenetics and Nuclear Signaling

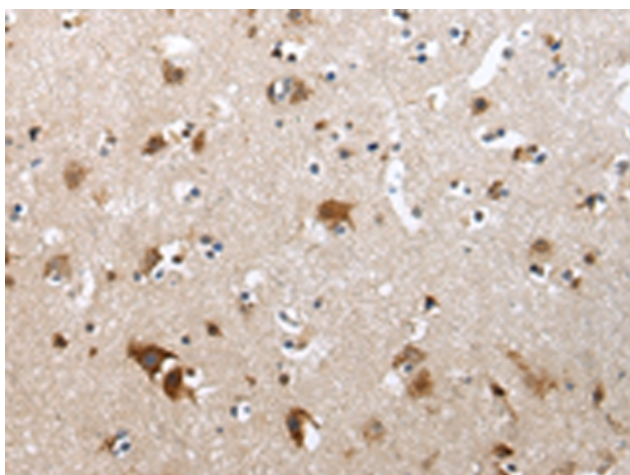
**Storage & Shipping:** Store at -20°C. Avoid repeated freezing and thawing



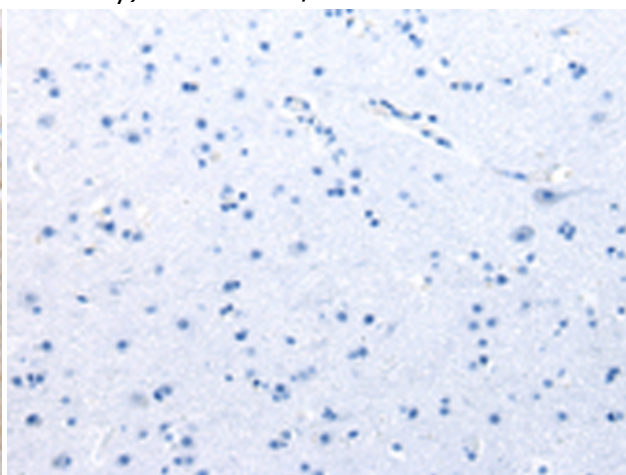
Immunohistochemistry analysis of paraffin embedded Human thyroid cancer tissue using 221155 (ZFP30 Antibody) at a dilution of 1/30 (Cytoplasm and Cell membrane).



In comparison with the IHC on the left, the same paraffin-embedded Human thyroid cancer tissue is first treated with the synthetic peptide and then with 221155 (Anti-ZFP30 Antibody) at dilution 1/30.



The image on the left is immunohistochemistry of paraffin-embedded Human brain tissue using 221155 (Anti-ZFP30 Antibody) at a dilution of 1/30.



In comparison with the IHC on the left, the same paraffin-embedded Human brain tissue is first treated with synthetic peptide and then with D262632 (Anti-ZFP30 Antibody) at dilution 1/30.