

## ZFP106 RABBIT PAB

**Cat.#:** N225472

**Product Name:** Anti-ZFP106 Rabbit pAb

**Synonyms:** SH3BP3; ZFP106; ZNF474

**UNIPROT ID:** Q9H2Y7

**Background:** RNA-binding protein. Specifically binds to 5'-GGGGCC-3' sequence repeats in RNA. Essential for maintenance of peripheral motor neuron and skeletal muscle function. Required for normal expression and/or alternative splicing of a number of genes in spinal cord and skeletal muscle, including the neurite outgrowth inhibitor RTN4. Also contributes to normal mitochondrial respiratory function in motor neurons, via an unknown mechanism.

**Immunogen:** The antiserum was produced against synthesized peptide derived from human ZFP106. AA range:1833-1882

**Applications:** WB,ELISA

**Recommended Dilutions:** WB: 1/500-1/1000 ELISA: 1/10000

**Host Species:** Rabbit

**Clonality:** Rabbit Polyclonal

**Clone ID:** -

**MW:** Calculated MW: 209 kDa; Observed MW: 209 kDa

**Isotype:** IgG

**Purification:** Affinity Chromatography

**Species Reactivity:** Human,Mouse,Monkey

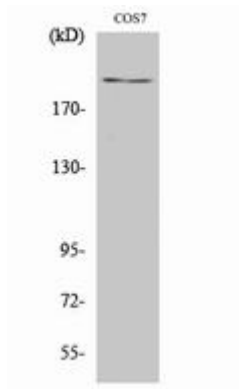
**Conjugation:** Unconjugated

**Modification:** Unmodified

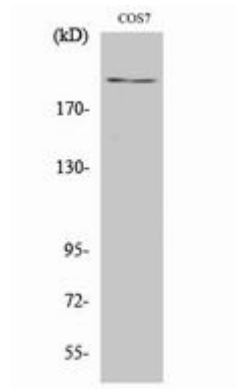
**Constituents:** PBS (without Mg<sup>2+</sup> and Ca<sup>2+</sup>), pH 7.3 containing 50% glycerol, 0.5% BSA and 0.02% sodium azide

**Research Areas:** Epigenetics and Nuclear Signaling

**Storage & Shipping:** Store at -20°C. Avoid repeated freezing and thawing



Western blot analysis of ZFP106 in COS7 lysates using ZFP106 antibody.



Western blot analysis of ZFP106 in COS7 lysates using ZFP106 antibody.