

## ZFAND3 RABBIT PAB

**Cat.#:** S218042

**Product Name:** Anti-ZFAND3 Rabbit Polyclonal Antibody

**Synonyms:** TEX27

**UNIPROT ID:** Q9H8U3 (Gene Accession - BC031481 )

**Background:** ZFAND3 contains 1 A20-type zinc finger and 1 AN1-type zinc finger. The exact function of ZFAND3 remains unknown.

**Immunogen:** Full length fusion protein

**Applications:** ELISA, IHC

**Recommended Dilutions:** IHC: 25-100; ELISA: 2000-5000

**Host Species:** Rabbit

**Clonality:** Rabbit Polyclonal

**Isotype:** Immunogen-specific rabbit IgG

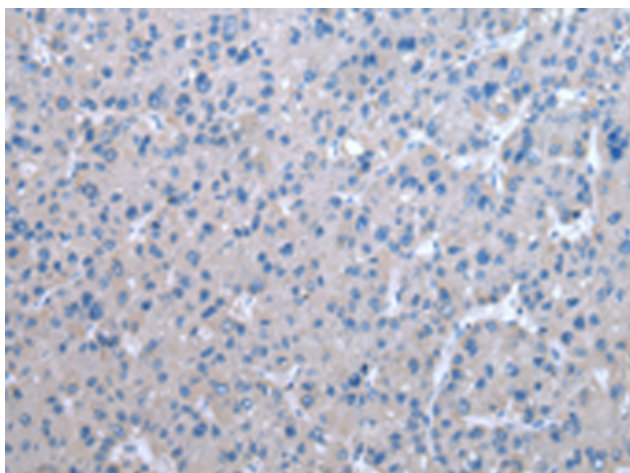
**Purification:** Antigen affinity purification

**Species Reactivity:** Human, Mouse, Rat

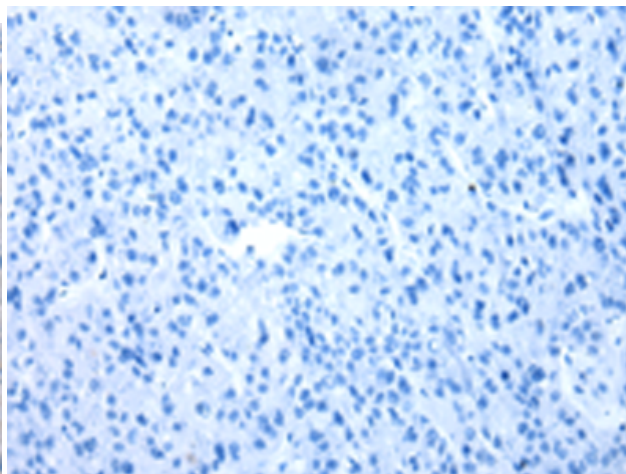
**Constituents:** PBS (without Mg<sup>2+</sup> and Ca<sup>2+</sup>), pH 7.4, 150 mM NaCl, 0.05% Sodium Azide and 40% glycerol

**Research Areas:** Epigenetics and Nuclear Signaling

**Storage & Shipping:** Store at -20°C. Avoid repeated freezing and thawing



Immunohistochemistry analysis of paraffin embedded Human liver cancer tissue using 218042(ZFAND3 Antibody) at a dilution of 1/30(Cytoplasm).



In comparison with the IHC on the left, the same paraffin-embedded Human liver cancer tissue is first treated with the fusion protein and then with 218042(Anti-ZFAND3 Antibody) at dilution 1/30.