

## ZFAND2A RABBIT PAB

**Cat.#:** S221153

**Product Name:** Anti-ZFAND2A Rabbit Polyclonal Antibody

**Synonyms:** AIRAP

**UNIPROT ID:** Q8N6M9 (Gene Accession - NP\_872297 )

**Background:** Predicted to enable zinc ion binding activity. Predicted to be involved in proteasome-mediated ubiquitin-dependent protein catabolic process and protein targeting to ER. Predicted to act upstream of or within cellular response to arsenic-containing substance and positive regulation of proteasomal ubiquitin-dependent protein catabolic process. Predicted to be located in nucleus. Predicted to be part of proteasome complex. Predicted to be active in endoplasmic reticulum. [provided by Alliance of Genome Resources, Apr 2022]

**Immunogen:** Synthetic peptide of human ZFAND2A

**Applications:** ELISA, WB, IHC

**Recommended Dilutions:** IHC: 50-200;WB: 500-2000;ELISA: 5000-10000

**Host Species:** Rabbit

**Clonality:** Rabbit Polyclonal

**Isotype:** Immunogen-specific rabbit IgG

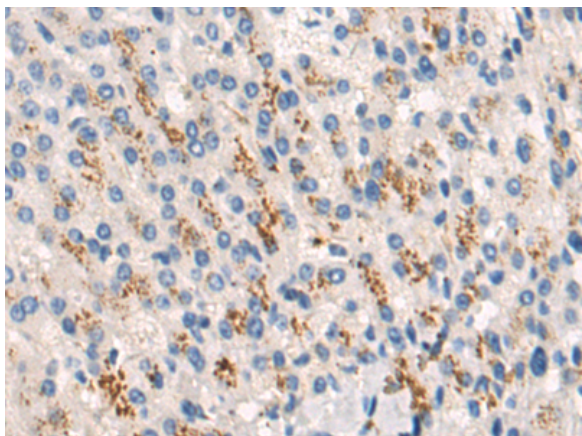
**Purification:** Antigen affinity purification

**Species Reactivity:** Human

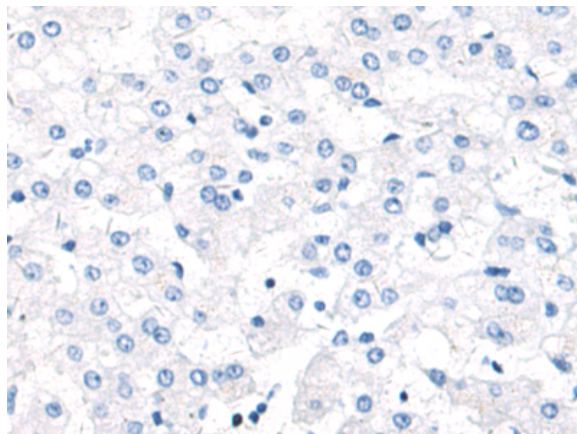
**Constituents:** PBS (without Mg<sup>2+</sup> and Ca<sup>2+</sup>), pH 7.4, 150 mM NaCl, 0.05% Sodium Azide and 40% glycerol

**Research Areas:** Cell Biology

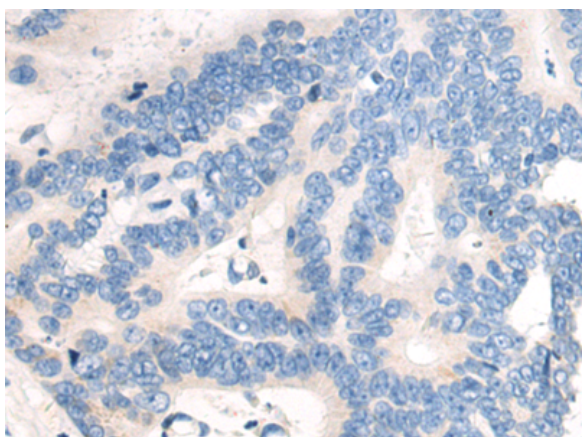
**Storage & Shipping:** Store at -20°C. Avoid repeated freezing and thawing



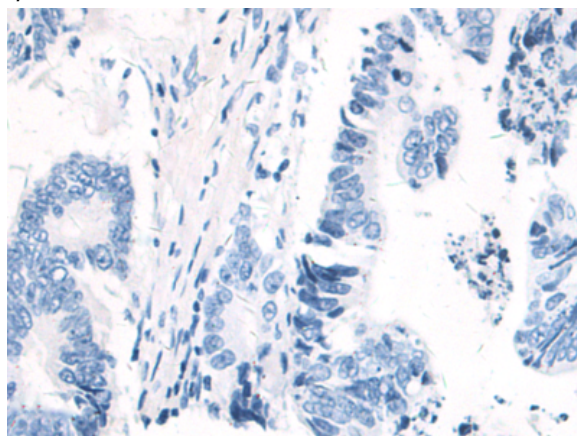
Immunohistochemistry analysis of paraffin embedded Human liver cancer tissue using 221153(ZFAND2A Antibody) at a dilution of 1/50(Cytoplasm).



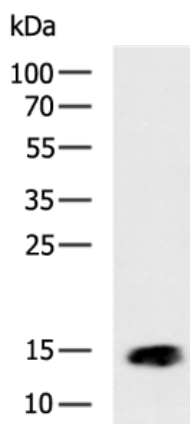
In comparison with the IHC on the left, the same paraffin-embedded Human liver cancer tissue is first treated with the synthetic peptide and then with 221153(Anti-ZFAND2A Antibody) at dilution 1/50.



The image on the left is immunohistochemistry of paraffin-embedded Human colorectal cancer tissue using 221153(Anti-ZFAND2A Antibody) at a dilution of 1/50.



In comparison with the IHC on the left, the same paraffin-embedded Human colorectal cancer tissue is first treated with synthetic peptide and then with D262629(Anti-ZFAND2A Antibody) at dilution 1/50.



Gel: 12%SDS-PAGE, Lysate: 40 µg;  
Lane: HepG2 cell lysate;  
Primary antibody: 221153(ZFAND2A Antibody) at dilution 1/700;  
Secondary antibody: HRP-conjugated Goat anti rabbit IgG at 1/5000 dilution;  
Exposure time: 1 minute



# Product Description

Pioneering GTPase and Oncogene Product Development since 2010

---