

ZFAND1 RABBIT PAB

Cat.#: S218041

Product Name: Anti-ZFAND1 Rabbit Polyclonal Antibody

Synonyms:

UNIPROT ID: Q8TCF1 (Gene Accession - BC022251)

Background: Plays a role in the regulation of cytoplasmic stress granules (SGs) turnover. SGs are dynamic and transient cytoplasmic ribonucleoprotein assemblies important for cellular protein homeostasis when protein production is suspended after acute exogenous stress. Associates with SGs and is involved in the efficient and specific arsenite-induced clearance process of SGs through the recruitment of the ubiquitin-selective ATPase VCP and the 26S proteasome.

Immunogen: Fusion protein of human ZFAND1

Applications: ELISA, WB, IHC

Recommended Dilutions: IHC: 100-300;WB: 1000-5000;ELISA: 5000-10000

Host Species: Rabbit

Clonality: Rabbit Polyclonal

Isotype: Immunogen-specific rabbit IgG

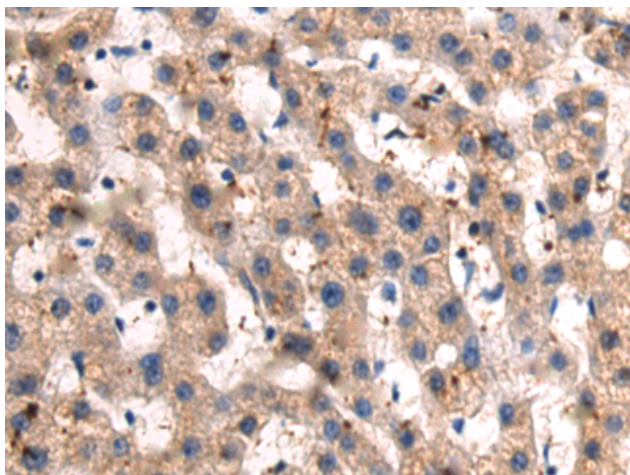
Purification: Antigen affinity purification

Species Reactivity: Human, Mouse

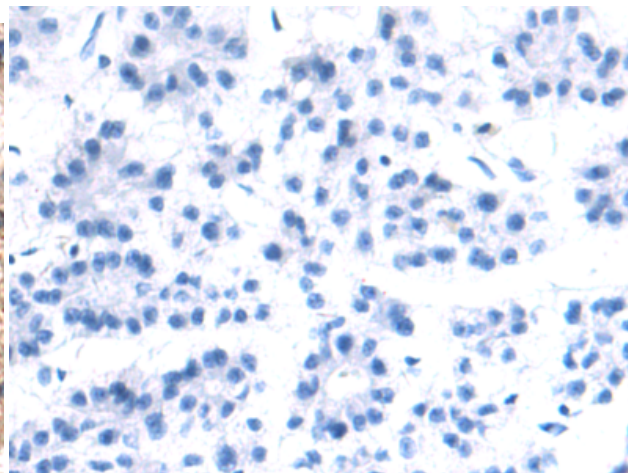
Constituents: PBS (without Mg²⁺ and Ca²⁺), pH 7.4, 150 mM NaCl, 0.05% Sodium Azide and 40% glycerol

Research Areas: Cell Biology

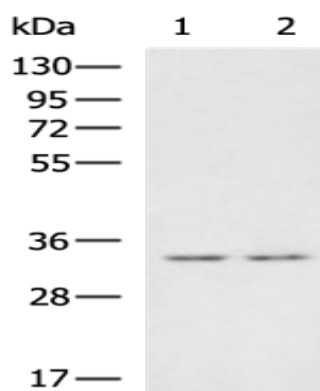
Storage & Shipping: Store at -20°C. Avoid repeated freezing and thawing



Immunohistochemistry analysis of paraffin embedded Human liver cancer tissue using 218041(ZFAND1 Antibody) at a dilution of 1/95(Cytoplasm).



In comparison with the IHC on the left, the same paraffin-embedded Human liver cancer tissue is first treated with the fusion protein and then with 218041(Anti-ZFAND1 Antibody) at dilution 1/95.



Gel: 8%SDS-PAGE, Lysate: 40 µg;
 Lane 1-2: Human cerebella tissue, Mouse brain tissue lysates;
 Primary antibody: 218041(ZFAND1 Antibody) at dilution 1/1350;
 Secondary antibody: HRP-conjugated Goat anti rabbit IgG at 1/5000 dilution;
 Exposure time: 1 minute