

ZEB2 RABBIT PAB

Cat.#: S216776

Product Name: Anti-ZEB2 Rabbit Polyclonal Antibody

Synonyms: SIP1; SIP-1; ZFH1B; HSPC082; SMADI1

UNIPROT ID: O60315 (Gene Accession - BC127102)

Background: The protein encoded by this gene is a member of the Zfh1 family of 2-handed zinc finger/homeodomain proteins. It is located in the nucleus and functions as a DNA-binding transcriptional repressor that interacts with activated SMADs. Mutations in this gene are associated with Hirschsprung disease/Mowat-Wilson syndrome. Alternatively spliced transcript variants have been found for this gene.

Immunogen: Fusion protein of human ZEB2

Applications: ELISA, IHC

Recommended Dilutions: IHC: 50-200; ELISA: 2000-5000

Host Species: Rabbit

Clonality: Rabbit Polyclonal

Isotype: Immunogen-specific rabbit IgG

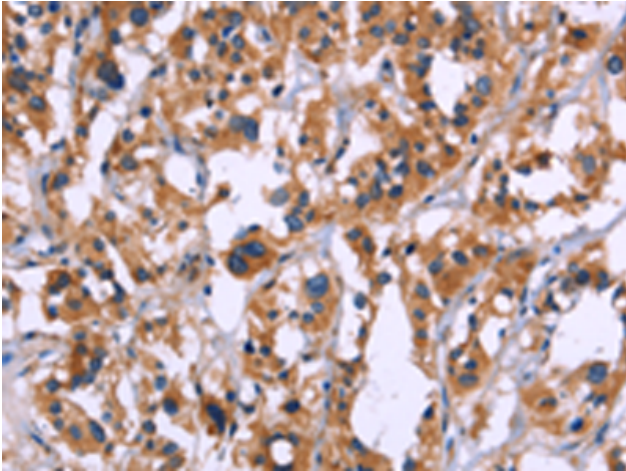
Purification: Antigen affinity purification

Species Reactivity: Human, Mouse

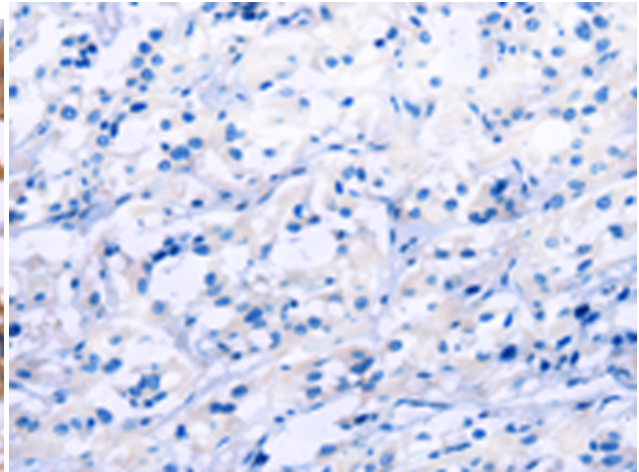
Constituents: PBS (without Mg²⁺ and Ca²⁺), pH 7.4, 150 mM NaCl, 0.05% Sodium Azide and 40% glycerol

Research Areas: Epigenetics and Nuclear Signaling, Cancer, Neuroscience

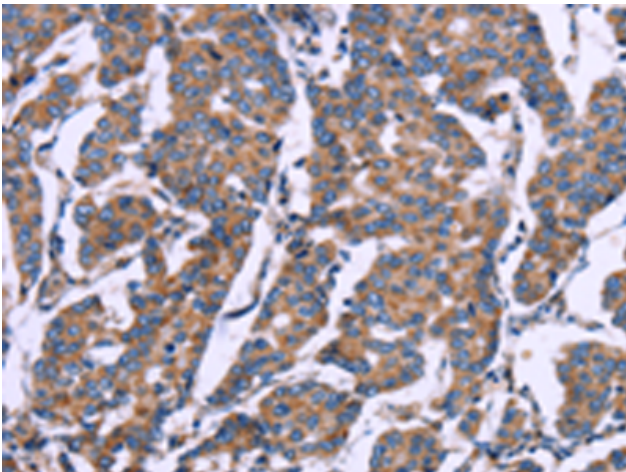
Storage & Shipping: Store at -20°C. Avoid repeated freezing and thawing



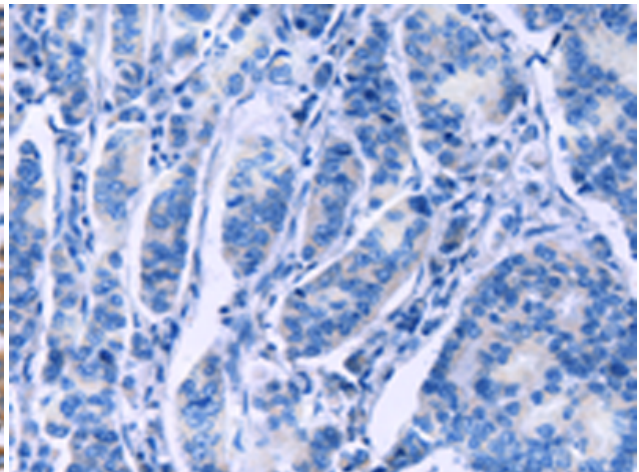
Immunohistochemistry analysis of paraffin embedded Human thyroid cancer tissue using 216776(ZEB2 Antibody) at a dilution of 1/60(Cytoplasm).



In comparison with the IHC on the left, the same paraffin-embedded Human thyroid cancer tissue is first treated with the fusion protein and then with 216776(Anti-ZEB2 Antibody) at dilution 1/60.



The image on the left is immunohistochemistry of paraffin-embedded Human breast cancer tissue using 216776(Anti-ZEB2 Antibody) at a dilution of 1/60.



In comparison with the IHC on the left, the same paraffin-embedded Human breast cancer tissue is first treated with fusion protein and then with D221217(Anti-ZEB2 Antibody) at dilution 1/60.