

ZDHHC5 RABBIT PAB

Cat.#: S221512

Product Name: Anti-ZDHHC5 Rabbit Polyclonal Antibody

Synonyms: DHHC5; ZNF375

UNIPROT ID: Q9C0B5 (Gene Accession - NP_056272)

Background: Enables palmitoyltransferase activity. Involved in positive regulation of pattern recognition receptor signaling pathway and positive regulation of protein localization to plasma membrane. Acts upstream of or within protein palmitoylation. Located in phagocytic vesicle and plasma membrane.

Immunogen: Synthetic peptide of human ZDHHC5

Applications: ELISA, IHC

Recommended Dilutions: IHC: 50-200; ELISA: 5000-10000

Host Species: Rabbit

Clonality: Rabbit Polyclonal

Isotype: Immunogen-specific rabbit IgG

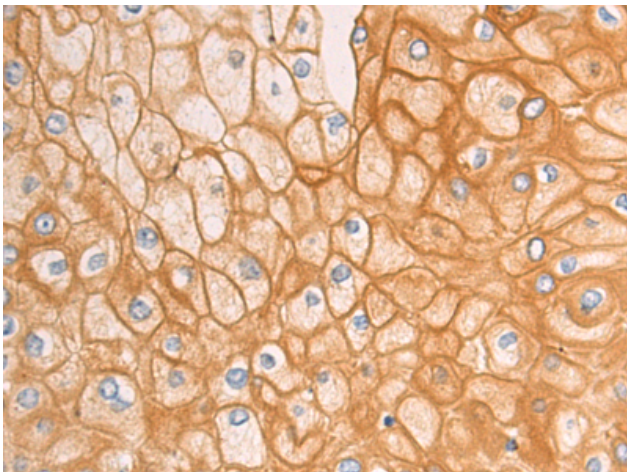
Purification: Antigen affinity purification

Species Reactivity: Human, Mouse, Rat

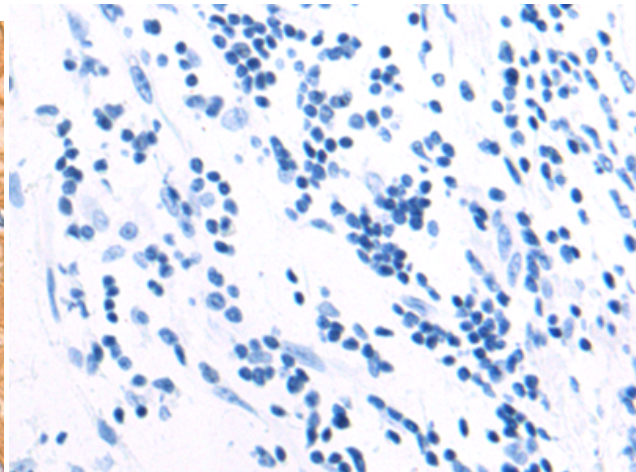
Constituents: PBS (without Mg²⁺ and Ca²⁺), pH 7.4, 150 mM NaCl, 0.05% Sodium Azide and 40% glycerol

Research Areas: Epigenetics and Nuclear Signaling, Cell Biology

Storage & Shipping: Store at -20°C. Avoid repeated freezing and thawing



Immunohistochemistry analysis of paraffin embedded Human esophagus cancer tissue using 221512(ZDHHC5 Antibody) at a dilution of 1/50(Cytoplasm and Cell membrane).



In comparison with the IHC on the left, the same paraffin-embedded Human esophagus cancer tissue is first treated with the synthetic peptide and then with 221512(Anti-ZDHHC5 Antibody) at dilution 1/50.