

ZDHHC20 RABBIT PAB

Cat.#: S218040

Product Name: Anti-ZDHHC20 Rabbit Polyclonal Antibody

Synonyms: DHHC20; DHHC-20; 4933421L13Rik

UNIPROT ID: Q5W0Z9 (Gene Accession - BC110517)

Background: Enables protein-cysteine S-palmitoyltransferase activity and zinc ion binding activity. Involved in peptidyl-L-cysteine S-palmitoylation. Located in intracellular membrane-bounded organelle and plasma membrane. Is integral component of Golgi membrane. [provided by Alliance of Genome Resources, Apr 2022]

Immunogen: Fusion protein of human ZDHHC20

Applications: ELISA, IHC

Recommended Dilutions: IHC: 150-300; ELISA: 5000-10000

Host Species: Rabbit

Clonality: Rabbit Polyclonal

Isotype: Immunogen-specific rabbit IgG

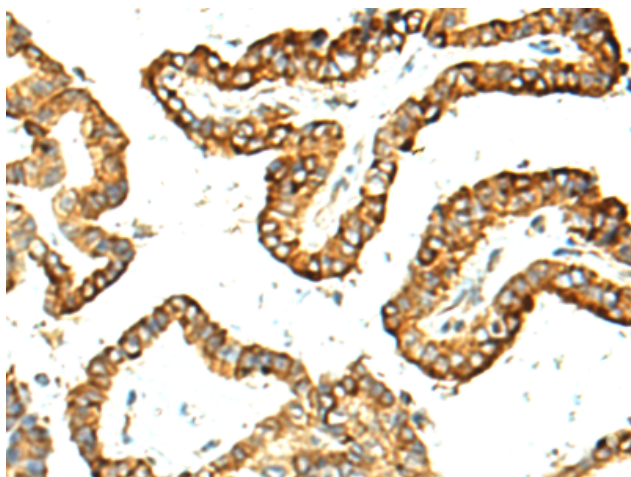
Purification: Antigen affinity purification

Species Reactivity: Human, Mouse

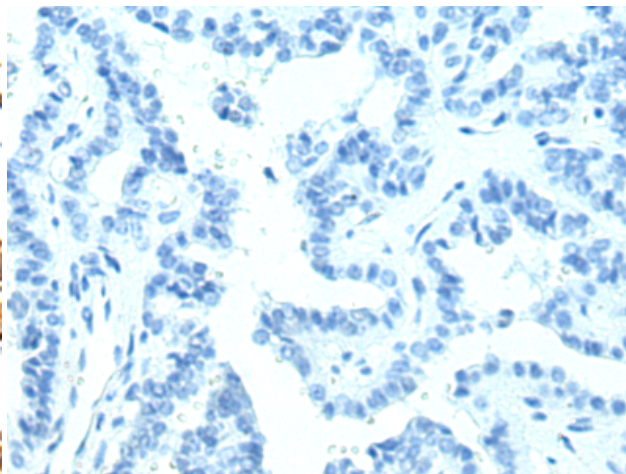
Constituents: PBS (without Mg²⁺ and Ca²⁺), pH 7.4, 150 mM NaCl, 0.05% Sodium Azide and 40% glycerol

Research Areas: Cell Biology

Storage & Shipping: Store at -20°C. Avoid repeated freezing and thawing



Immunohistochemistry analysis of paraffin embedded Human thyroid cancer tissue using 218040(ZDHHC20 Antibody) at a dilution of 1/130(Cytoplasm and Cell membrane).



In comparison with the IHC on the left, the same paraffin-embedded Human thyroid cancer tissue is first treated with the fusion protein and then with 218040(Anti-ZDHHC20 Antibody) at dilution 1/130.