

## ZBTB4 RABBIT PAB

**Cat.#:** S221508

**Product Name:** Anti-ZBTB4 Rabbit Polyclonal Antibody

**Synonyms:** ZNF903; KAISO-L1

**UNIPROT ID:** Q9P1Z0 (Gene Accession - NP\_001122305 )

**Background:** ZBTB4 (zinc finger and BTB domain containing 4), also known as KAISO-L1 (KAISO-like zinc finger protein 1), is a 1,013 amino acid nuclear protein that is involved in transcriptional regulation. ZBTB4 contains one BTB (POZ) domain, six C2H2-type zinc fingers and is phosphorylated and downregulated by HIPK2. The gene encoding ZBTB4 maps to human chromosome 17, which comprises over 2.5% of the human genome and encodes over 1,200 genes.

**Immunogen:** Synthetic peptide of human ZBTB4

**Applications:** ELISA, IHC

**Recommended Dilutions:** IHC: 20-100; ELISA: 5000-10000

**Host Species:** Rabbit

**Clonality:** Rabbit Polyclonal

**Isotype:** Immunogen-specific rabbit IgG

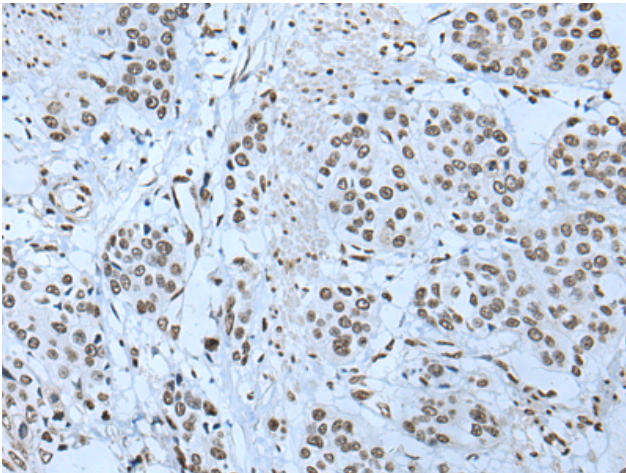
**Purification:** Antigen affinity purification

**Species Reactivity:** Human, Rat

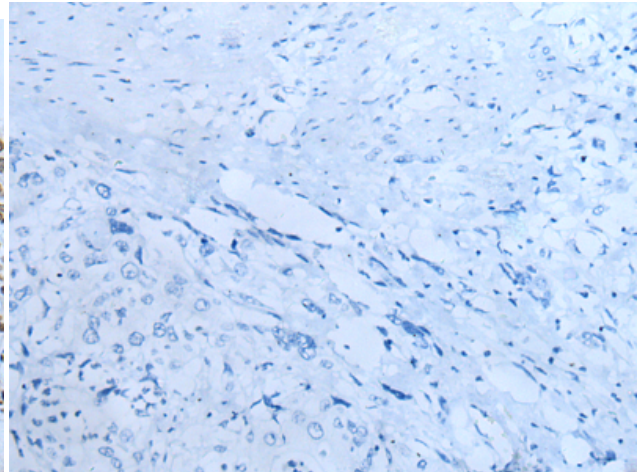
**Constituents:** PBS (without Mg<sup>2+</sup> and Ca<sup>2+</sup>), pH 7.4, 150 mM NaCl, 0.05% Sodium Azide and 40% glycerol

**Research Areas:** Epigenetics and Nuclear Signaling

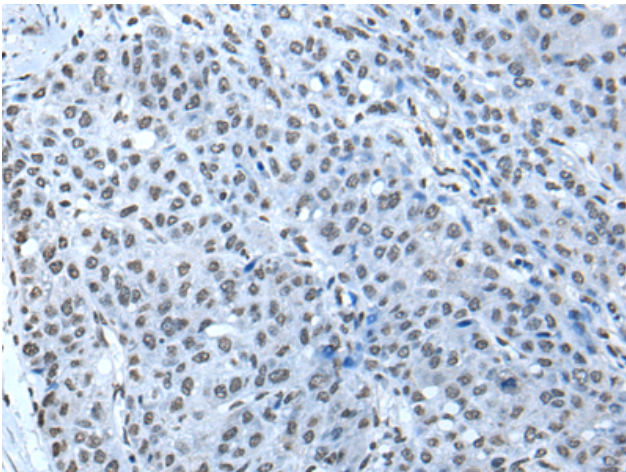
**Storage & Shipping:** Store at -20°C. Avoid repeated freezing and thawing



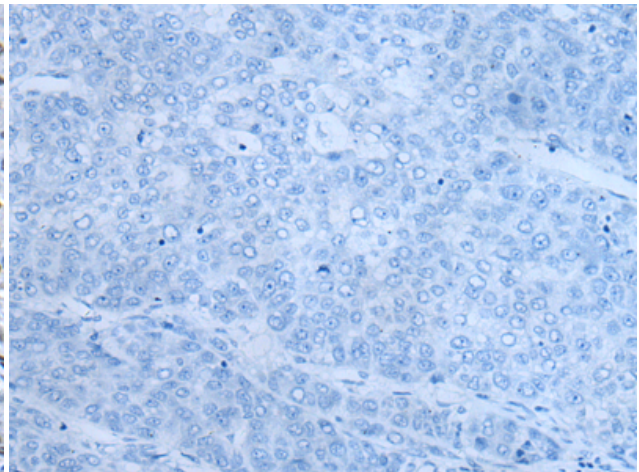
Immunohistochemistry analysis of paraffin embedded Human prostate cancer tissue using 221508 (ZBTB4 Antibody) at a dilution of 1/20 (Nucleus).



In comparison with the IHC on the left, the same paraffin-embedded Human prostate cancer tissue is first treated with the synthetic peptide and then with 221508 (Anti-ZBTB4 Antibody) at dilution 1/20.



The image on the left is immunohistochemistry of paraffin-embedded Human liver cancer tissue using 221508 (Anti-ZBTB4 Antibody) at a dilution of 1/20.



In comparison with the IHC on the left, the same paraffin-embedded Human liver cancer tissue is first treated with synthetic peptide and then with D263134 (Anti-ZBTB4 Antibody) at dilution 1/20.