

## ZBTB1 ? RABBIT PAB

**Cat.#:** S213312

**Product Name:** Anti-ZBTB1 Rabbit Polyclonal Antibody

**Synonyms:** ZNF909

**UNIPROT ID:** Q9Y2K1 (Gene Accession - NP\_001116801 )

**Background:** The BTB (Broad-Complex, Tramtrack and Bric a brac) domain, also known as the POZ (Poxvirus and Zinc finger) domain, is an N-terminal homodimerization domain that contains multiple copies of kelch repeats and/or C2H2-type zinc fingers. Proteins that contain BTB domains are thought to be involved in transcriptional regulation via control of chromatin structure and function. ZBTB1 (zinc finger and BTB domain containing 1), also known as KIAA0997, is a 713 amino acid nuclear protein that contains one BTB (POZ) domain and 8 C2H2-type zinc fingers.

**Immunogen:** Synthetic peptide of human ZBTB1

**Applications:** ELISA, IHC

**Recommended Dilutions:** IHC: 50-200; ELISA: 2000-5000

**Host Species:** Rabbit

**Clonality:** Rabbit Polyclonal

**Isotype:** Immunogen-specific rabbit IgG

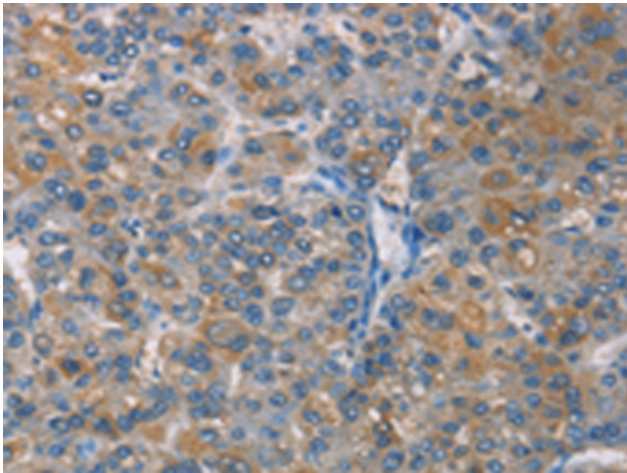
**Purification:** Antigen affinity purification

**Species Reactivity:** Human, Mouse

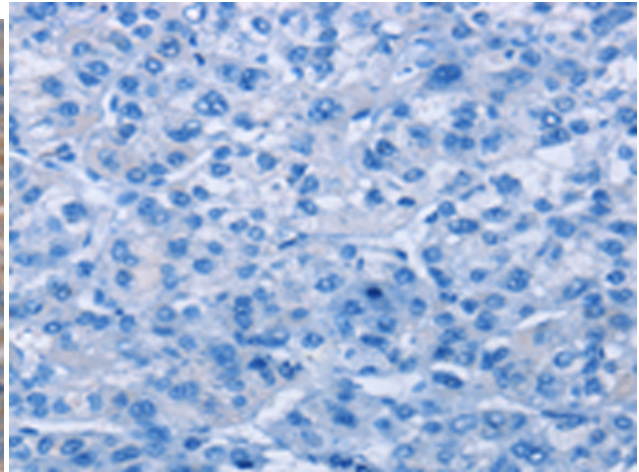
**Constituents:** PBS (without Mg<sup>2+</sup> and Ca<sup>2+</sup>), pH 7.4, 150 mM NaCl, 0.05% Sodium Azide and 40% glycerol

**Research Areas:** Epigenetics and Nuclear Signaling

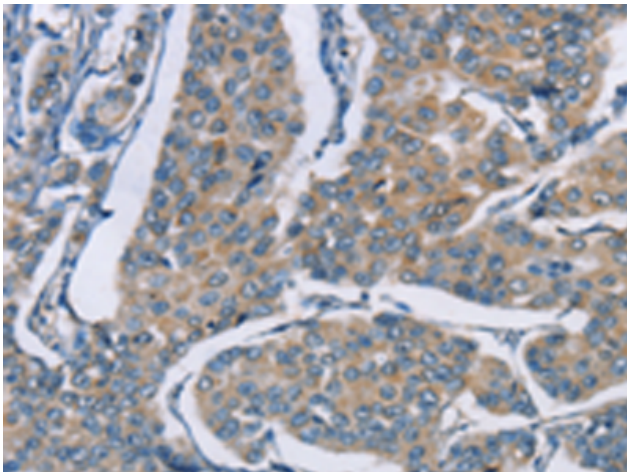
**Storage & Shipping:** Store at -20°C. Avoid repeated freezing and thawing



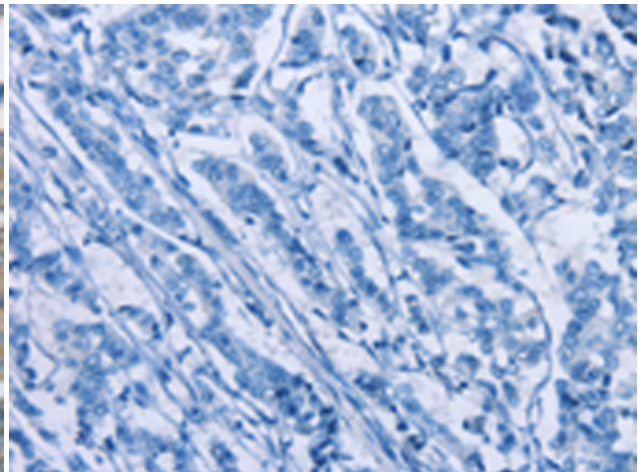
Immunohistochemistry analysis of paraffin embedded Human liver cancer tissue using 213312(ZBTB1 Antibody) at a dilution of 1/50(Cytoplasm ).



In comparison with the IHC on the left, the same paraffin-embedded Human liver cancer tissue is first treated with the synthetic peptide and then with 213312(Anti-ZBTB1 Antibody) at dilution 1/50.



The image on the left is immunohistochemistry of paraffin-embedded Human breast cancer tissue using 213312(Anti-ZBTB1 Antibody) at a dilution of 1/50.



In comparison with the IHC on the left, the same paraffin-embedded Human breast cancer tissue is first treated with synthetic peptide and then with D156010(Anti-ZBTB1 Antibody) at dilution 1/50.