

YY1 RABBIT PAB

Cat.#: S221537

Product Name: Anti-YY1 Rabbit Polyclonal Antibody

Synonyms: DELTA; NF-E1; UCRBP; INO80S; YIN-YANG-1

UNIPROT ID: P25490 (Gene Accession - NP_003394)

Background: YY1 is a ubiquitously distributed transcription factor belonging to the GLI-Kruppel class of zinc finger proteins. The protein is involved in repressing and activating a diverse number of promoters. YY1 may direct histone deacetylases and histone acetyltransferases to a promoter in order to activate or repress the promoter, thus implicating histone modification in the function of YY1.

Immunogen: Synthetic peptide of human YY1

Applications: ELISA, WB, IHC

Recommended Dilutions: IHC: 25-100;WB: 200-1000;ELISA: 5000-10000

Host Species: Rabbit

Clonality: Rabbit Polyclonal

Isotype: Immunogen-specific rabbit IgG

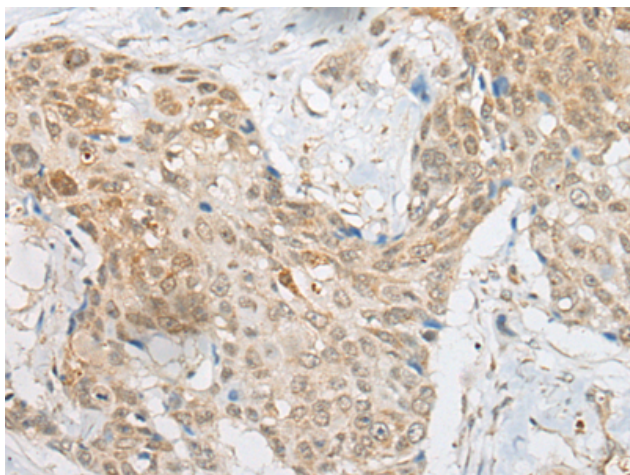
Purification: Antigen affinity purification

Species Reactivity: Human, Mouse

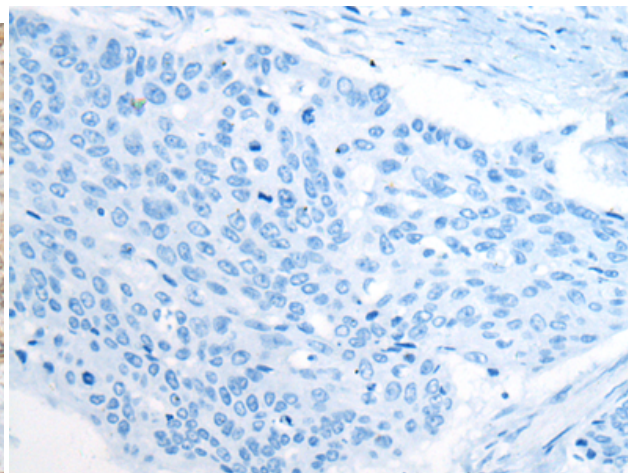
Constituents: PBS (without Mg²⁺ and Ca²⁺), pH 7.4, 150 mM NaCl, 0.05% Sodium Azide and 40% glycerol

Research Areas: Epigenetics and Nuclear Signaling, Neuroscience

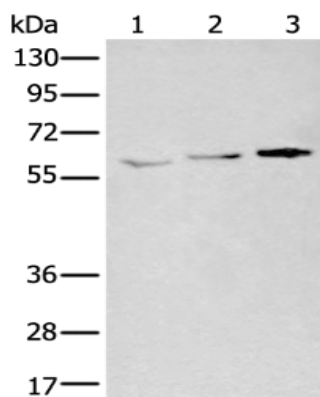
Storage & Shipping: Store at -20°C. Avoid repeated freezing and thawing



Immunohistochemistry analysis of paraffin embedded Human esophagus cancer tissue using 221537(YY1 Antibody) at a dilution of 1/25(Nucleus).



In comparison with the IHC on the left, the same paraffin-embedded Human esophagus cancer tissue is first treated with the synthetic peptide and then with 221537(Anti-YY1 Antibody) at dilution 1/25.



Gel: 8%SDS-PAGE, Lysate: 40 μ g;
Lane 1-3: 293T, NIH/3T3 and Hela cell lysates;
Primary antibody: 221537(YY1 Antibody) at dilution 1/200;
Secondary antibody: Goat anti rabbit IgG at 1/8000 dilution;
Exposure time: 20 seconds