

YWHAE RABBIT PAB

Cat.#: S219934

Product Name: Anti-YWHAE Rabbit Polyclonal Antibody

Synonyms: MDS, MDCR, KCIP-1, 14-3-3E

UNIPROT ID: P62258 (Gene Accession - NP_006752)

Background: This gene product belongs to the 14-3-3 family of proteins which mediate signal transduction by binding to phosphoserine-containing proteins. This highly conserved protein family is found in both plants and mammals, and this protein is 100% identical to the mouse ortholog. It interacts with CDC25 phosphatases, RAF1 and IRS1 proteins, suggesting its role in diverse biochemical activities related to signal transduction, such as cell division and regulation of insulin sensitivity. It has also been implicated in the pathogenesis of small cell lung cancer. Two transcript variants, one protein-coding and the other non-protein-coding, have been found for this gene.

Immunogen: Synthetic peptide of human YWHAE

Applications: ELISA, WB, IHC

Recommended Dilutions: IHC: 100-300;WB: 1000-5000;ELISA: 2000-10000

Host Species: Rabbit

Clonality: Rabbit Polyclonal

Isotype: Immunogen-specific rabbit IgG

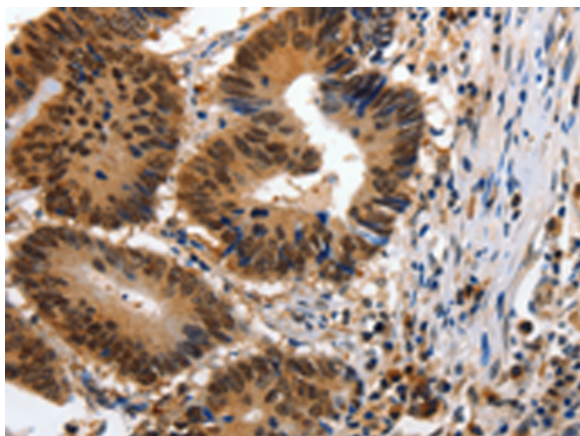
Purification: Antigen affinity purification

Species Reactivity: Human, Mouse, Rat

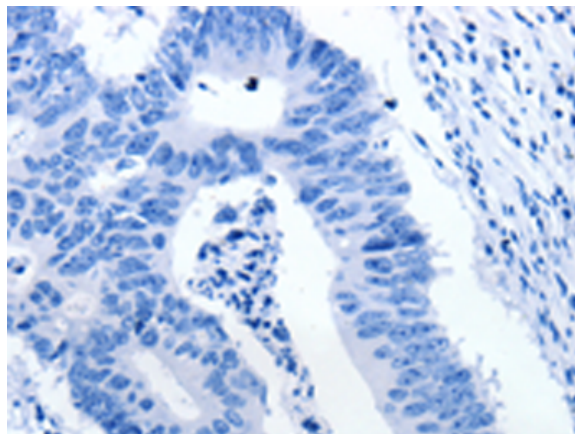
Constituents: PBS (without Mg²⁺ and Ca²⁺), pH 7.4, 150 mM NaCl, 0.05% Sodium Azide and 40% glycerol

Research Areas: Signal Transduction, Neuroscience

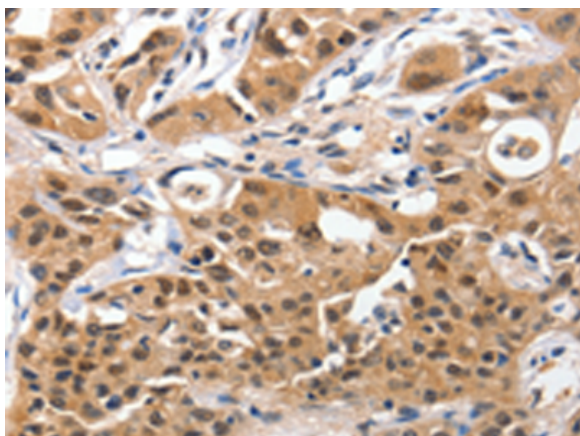
Storage & Shipping: Store at -20°C. Avoid repeated freezing and thawing



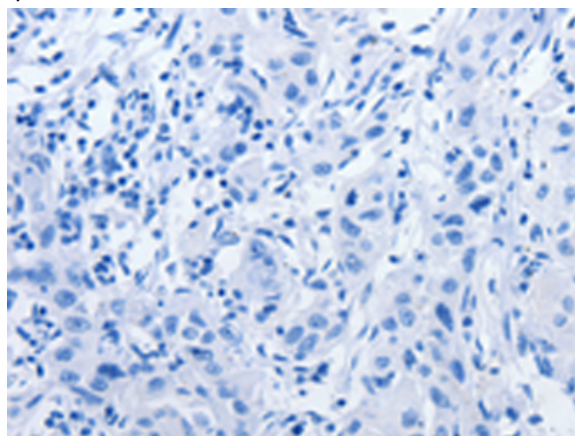
Immunohistochemistry analysis of paraffin embedded Human colon cancer tissue using 219934(YWHAE Antibody) at a dilution of 1/100(Cytoplasm, Nucleus).



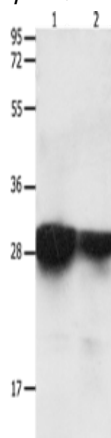
In comparison with the IHC on the left, the same paraffin-embedded Human colon cancer tissue is first treated with the synthetic peptide and then with 219934(Anti-YWHAE Antibody) at dilution 1/100.



The image on the left is immunohistochemistry of paraffin-embedded Human lung cancer tissue using 219934(Anti-YWHAE Antibody) at a dilution of 1/100.



In comparison with the IHC on the left, the same paraffin-embedded Human lung cancer tissue is first treated with synthetic peptide and then with D260651(Anti-YWHAE Antibody) at dilution 1/100.



Gel: 12%SDS-PAGE, Lysate: 40 µg;
Lane 1-2: Human brain malignant glioma tissue,
Human laryngocarcinoma tissue;
Primary antibody: 219934(YWHAE Antibody) at
dilution 1/2200;
Secondary antibody: Goat anti rabbit IgG at 1/8000
dilution;
Exposure time: 30 seconds



Product Description

Pioneering GTPase and Oncogene Product Development since 2010
