

YTHDF1 RABBIT MAB

Cat.#: N263612

Product Name: Anti-YTHDF1 Rabbit Monoclonal Antibody

Synonyms: C20orf21; DF1

UNIPROT ID: P59326

Background: Specifically recognizes and binds N6-methyladenosine (m6A)-containing mRNAs, and regulates their stability.

Immunogen: Recombinant protein of mouse YTHDF1

Applications: WB,IP

Recommended Dilutions: WB: 1/500-1/1000 IP: 1/20

Host Species: Rabbit

Clonality: Rabbit Monoclonal

Clone ID: R05-2E7

MW: Calculated MW: 61 kDa; Observed MW: 61 kDa

Isotype: IgG

Purification: Affinity Purified

Species Reactivity: Human,Hamster

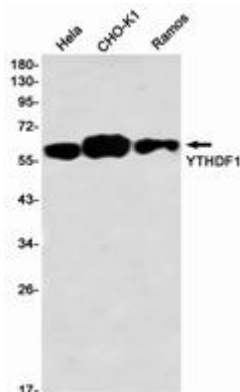
Conjugation: Unconjugated

Modification: Unmodified

Constituents: PBS (without Mg²⁺ and Ca²⁺), pH 7.3 containing 50% glycerol, 0.5% BSA and 0.02% sodium azide

Research Areas: Epigenetics and Nuclear Signaling

Storage & Shipping: Store at -20°C. Avoid repeated freezing and thawing



Western blot analysis of YTHDF1 in HeLa, CHO-K1, Ramos lysates using YTHDF1 antibody.



Product Description

Pioneering GTPase and Oncogene Product Development since 2010
