

## YTHDC2 RABBIT MAB

**Cat.#:** N263611

**Product Name:** Anti-YTHDC2 Rabbit Monoclonal Antibody

**Synonyms:** CAHL; hYTHDC2

**UNIPROT ID:** B2RR83

**Background:** 3'-5' RNA helicase that plays a key role in the male and female germline by promoting transition from mitotic to meiotic divisions in stem cells.

**Immunogen:** Recombinant protein of mouse YTHDC2

**Applications:** WB,IP

**Recommended Dilutions:** WB: 1/500-1/1000 IP: 1/20

**Host Species:** Rabbit

**Clonality:** Rabbit Monoclonal

**Clone ID:** R04-7F8

**MW:** Calculated MW: 161 kDa; Observed MW: 161 kDa

**Isotype:** IgG

**Purification:** Affinity Purified

**Species Reactivity:** Human

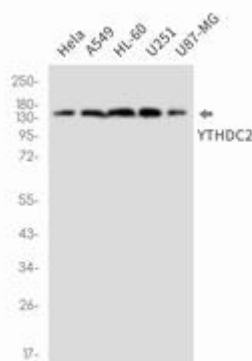
**Conjugation:** Unconjugated

**Modification:** Unmodified

**Constituents:** PBS (without Mg<sup>2+</sup> and Ca<sup>2+</sup>), pH 7.3 containing 50% glycerol, 0.5% BSA and 0.02% sodium azide

**Research Areas:** Epigenetics and Nuclear Signaling

**Storage & Shipping:** Store at -20°C. Avoid repeated freezing and thawing



Western blot analysis of YTHDC2 in HeLa, A549, HL-60, U251, U87-MG lysates using YTHDC2 antibody.



# Product Description

Pioneering GTPase and Oncogene Product Development since 2010

---