

YPEL4 RABBIT PAB

Cat.#: S221533

Product Name: Anti-YPEL4 Rabbit Polyclonal Antibody

Synonyms:

UNIPROT ID: Q96NS1 (Gene Accession - NP_659445)

Background: YPEL4 (yippee-like 4) belongs to a family of five yippee-like proteins, all of which localize to the centrosome or mitotic spindle and are widely expressed in both adult and fetal tissue. This localization plus the fact that the family of human YPEL proteins share a high degree of sequence homology across species suggests that these proteins may have a conserved function involved in cell division. YPEL4 is ubiquitously expressed in adult tissues and has been shown to associate with the major vault protein (MVP). It has been suggested that MVP can inhibit YPEL4's ability to activate Elk-1 in the MAPK signaling pathway.

Immunogen: Synthetic peptide of human YPEL4

Applications: ELISA, IHC

Recommended Dilutions: IHC: 25-100; ELISA: 5000-10000

Host Species: Rabbit

Clonality: Rabbit Polyclonal

Isotype: Immunogen-specific rabbit IgG

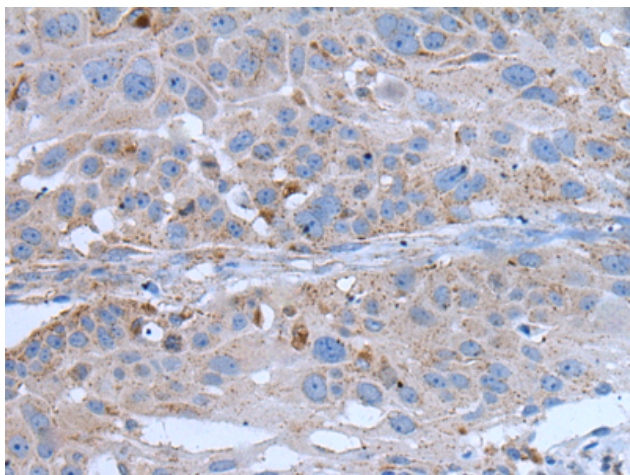
Purification: Antigen affinity purification

Species Reactivity: Human, Mouse, Rat

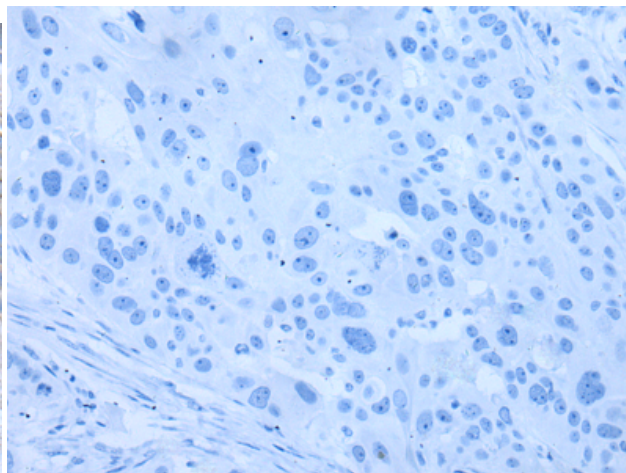
Constituents: PBS (without Mg²⁺ and Ca²⁺), pH 7.4, 150 mM NaCl, 0.05% Sodium Azide and 40% glycerol

Research Areas: Cell Biology

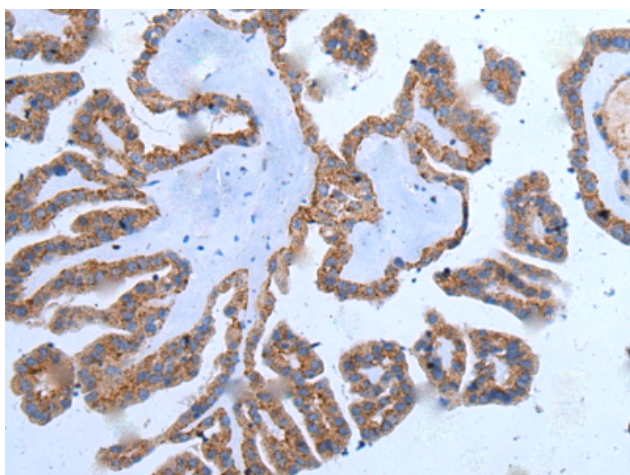
Storage & Shipping: Store at -20°C. Avoid repeated freezing and thawing



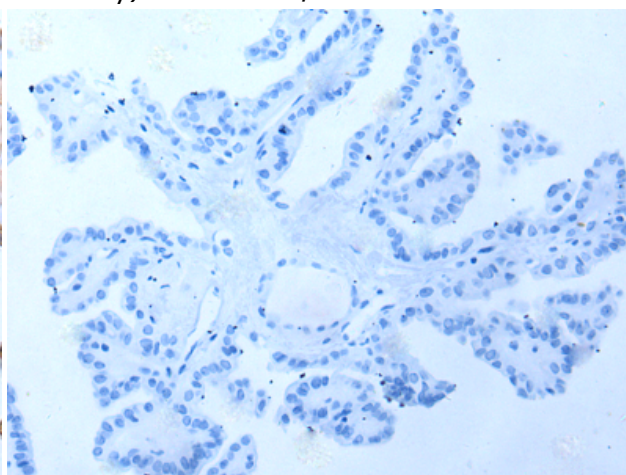
Immunohistochemistry analysis of paraffin embedded Human esophagus cancer tissue using 221533(YPEL4 Antibody) at a dilution of 1/25(Cytoplasm).



In comparison with the IHC on the left, the same paraffin-embedded Human esophagus cancer tissue is first treated with the synthetic peptide and then with 221533(Anti-YPEL4 Antibody) at dilution 1/25.



The image on the left is immunohistochemistry of paraffin-embedded Human thyroid cancer tissue using 221533(Anti-YPEL4 Antibody) at a dilution of 1/25.



In comparison with the IHC on the left, the same paraffin-embedded Human thyroid cancer tissue is first treated with synthetic peptide and then with D263169(Anti-YPEL4 Antibody) at dilution 1/25.