

XRCC4 RABBIT PAB

Cat.#: S218037

Product Name: Anti-XRCC4 Rabbit Polyclonal Antibody

Synonyms: SSMED

UNIPROT ID: Q13426 (Gene Accession - BC016314)

Background: The protein encoded by this gene functions together with DNA ligase IV and the DNA-dependent protein kinase in the repair of DNA double-strand breaks. This protein plays a role in both non-homologous end joining and the completion of V(D)J recombination. Mutations in this gene can cause short stature, microcephaly, and endocrine dysfunction (SSMED). Alternative splicing generates several transcript variants.

Immunogen: Fusion protein of human XRCC4

Applications: ELISA, IHC

Recommended Dilutions: IHC: 50–200; ELISA: 5000–10000

Host Species: Rabbit

Clonality: Rabbit Polyclonal

Isotype: Immunogen-specific rabbit IgG

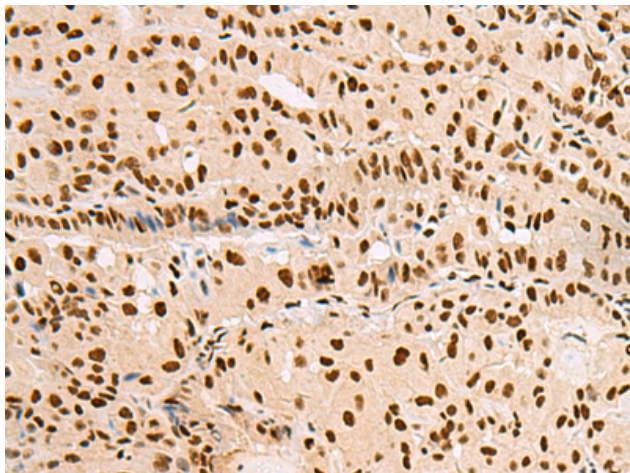
Purification: Antigen affinity purification

Species Reactivity: Human

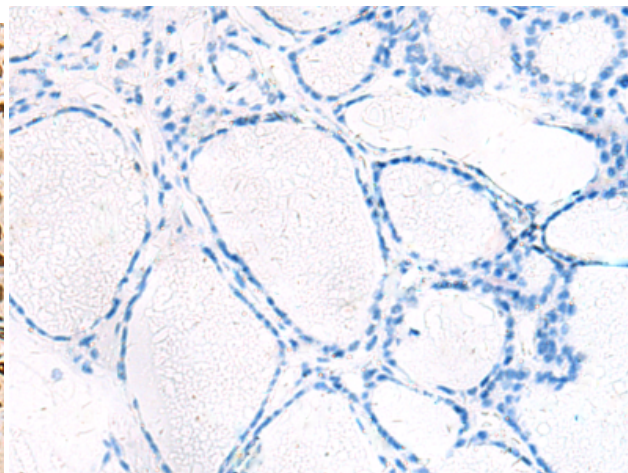
Constituents: PBS (without Mg²⁺ and Ca²⁺), pH 7.4, 150 mM NaCl, 0.05% Sodium Azide and 40% glycerol

Research Areas: Epigenetics and Nuclear Signaling

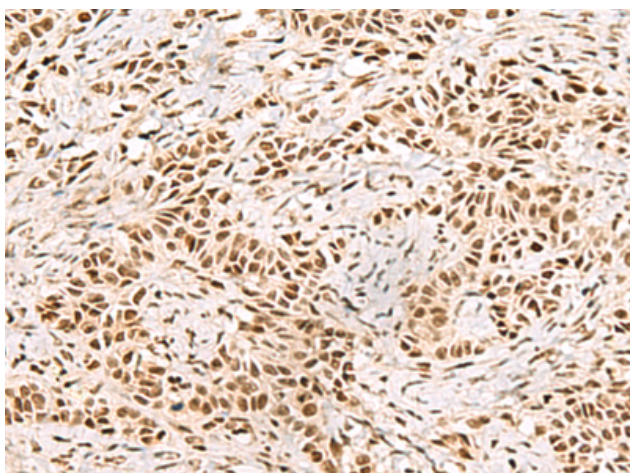
Storage & Shipping: Store at -20°C. Avoid repeated freezing and thawing



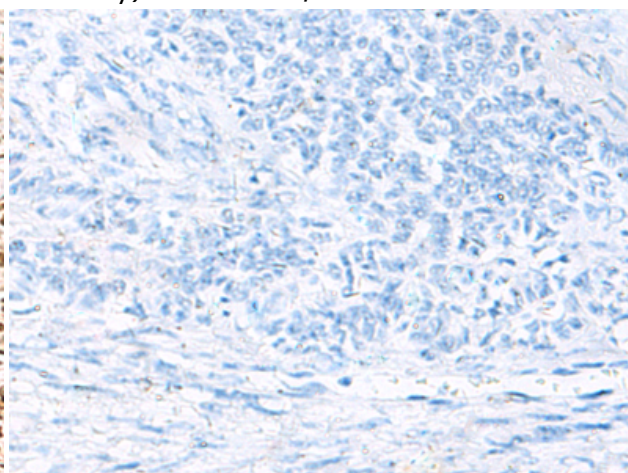
Immunohistochemistry analysis of paraffin embedded Human thyroid cancer tissue using 218037 (XRCC4 Antibody) at a dilution of 1/60 (Nucleus).



In comparison with the IHC on the left, the same paraffin-embedded Human thyroid cancer tissue is first treated with the fusion protein and then with 218037 (Anti-XRCC4 Antibody) at dilution 1/60.



The image on the left is immunohistochemistry of paraffin-embedded Human ovarian cancer tissue using 218037 (Anti-XRCC4 Antibody) at a dilution of 1/60.



In comparison with the IHC on the left, the same paraffin-embedded Human ovarian cancer tissue is first treated with fusion protein and then with D223589 (Anti-XRCC4 Antibody) at dilution 1/60.