

## XPNPEP3 RABBIT PAB

**Cat.#:** S218747

**Product Name:** Anti-XPNPEP3 Rabbit Polyclonal Antibody

**Synonyms:** APP3; ICP55; NPHPL1

**UNIPROT ID:** Q9NQH7 (Gene Accession - BC001681)

**Background:** The protein encoded by this gene belongs to the family of X-pro-aminopeptidases that utilize a metal cofactor, and remove the N-terminal amino acid from peptides with a proline residue in the penultimate position. This protein has been shown to localize to the mitochondria of renal cells, and have a role in ciliary function. Mutations in this gene are associated with nephronophthisis-like nephropathy-1. Alternatively spliced transcript variants encoding different isoforms have been noted for this gene, however, expression of some of these isoforms in vivo is not known.

**Immunogen:** Fusion protein of human XPNPEP3

**Applications:** ELISA, WB, IHC

**Recommended Dilutions:** IHC: 30-150;WB: 200-1000;ELISA: 5000-10000

**Host Species:** Rabbit

**Clonality:** Rabbit Polyclonal

**Isotype:** Immunogen-specific rabbit IgG

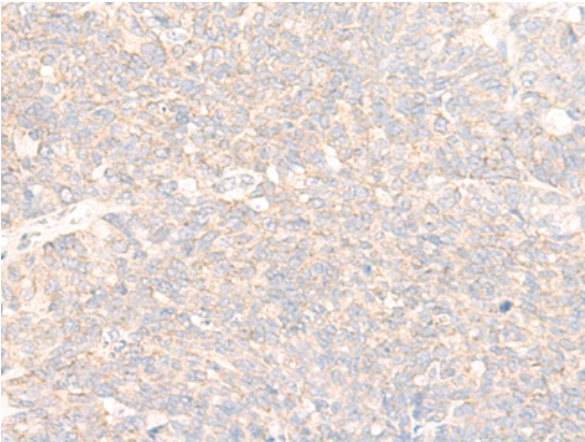
**Purification:** Antigen affinity purification

**Species Reactivity:** Human, Mouse, Rat

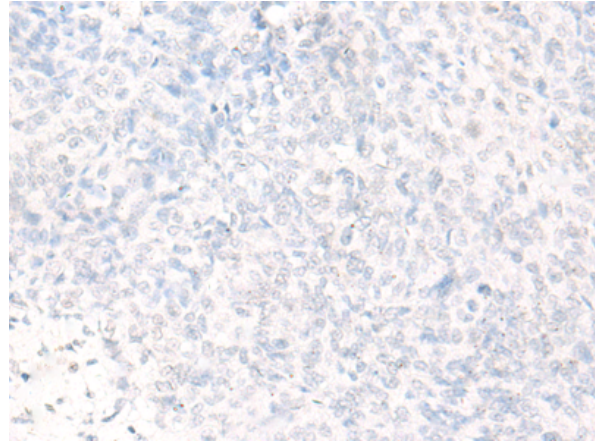
**Constituents:** PBS (without Mg<sup>2+</sup> and Ca<sup>2+</sup>), pH 7.4, 150 mM NaCl, 0.05% Sodium Azide and 40% glycerol

**Research Areas:** Metabolism

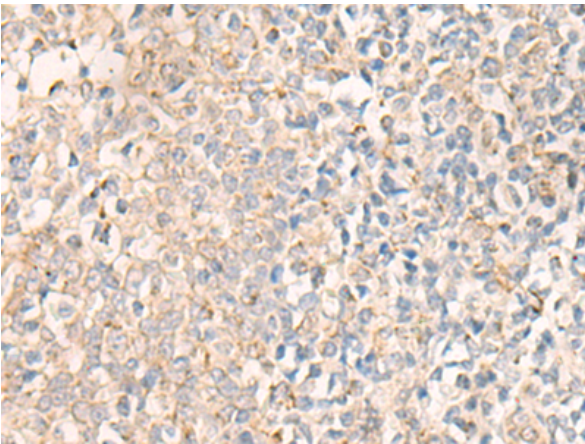
**Storage & Shipping:** Store at -20°C. Avoid repeated freezing and thawing



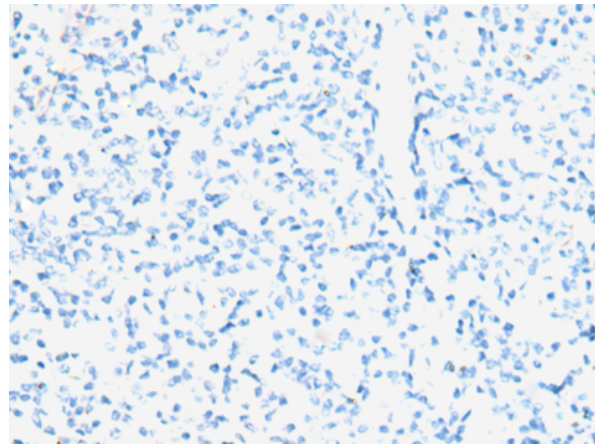
Immunohistochemistry analysis of paraffin embedded Human ovarian cancer tissue using 218747(XPNPEP3 Antibody) at a dilution of 1/25(Cytoplasm).



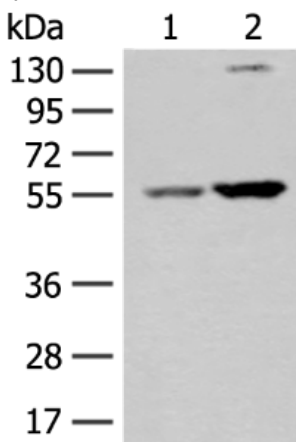
In comparison with the IHC on the left, the same paraffin-embedded Human ovarian cancer tissue is first treated with the fusion protein and then with 218747(Anti-XPNPEP3 Antibody) at dilution 1/25.



The image on the left is immunohistochemistry of paraffin-embedded Human tonsil tissue using 218747(Anti-XPNPEP3 Antibody) at a dilution of 1/25.



In comparison with the IHC on the left, the same paraffin-embedded Human tonsil tissue is first treated with fusion protein and then with D225095(Anti-XPNPEP3 Antibody) at dilution 1/25.



Gel: 8%SDS-PAGE, Lysate: 40 µg;  
Lane 1-2: PC-3 and 293T cell lysates;  
Primary antibody: 218747(XPNPEP3 Antibody) at dilution 1/250;  
Secondary antibody: Goat anti rabbit IgG at 1/8000 dilution;  
Exposure time: 3 seconds



# Product Description

Pioneering GTPase and Oncogene Product Development since 2010

---