

## XPNPEP2 RABBIT PAB

**Cat.#:** S218274

**Product Name:** Anti-XPNPEP2 Rabbit Polyclonal Antibody

**Synonyms:** APP2; AEACEI

**UNIPROT ID:** O43895 (Gene Accession - BC126174 )

**Background:** Aminopeptidase P is a hydrolase specific for N-terminal imido bonds, which are common to several collagen degradation products, neuropeptides, vasoactive peptides, and cytokines. Structurally, the enzyme is a member of the 'pita bread fold' family and occurs in mammalian tissues in both soluble and GPI-anchored membrane-bound forms. A membrane-bound and soluble form of this enzyme have been identified as products of two separate genes.

**Immunogen:** Fusion protein of human XPNPEP2

**Applications:** ELISA, WB, IHC

**Recommended Dilutions:** IHC: 25-100;WB: 200-1000;ELISA: 5000-10000

**Host Species:** Rabbit

**Clonality:** Rabbit Polyclonal

**Isotype:** Immunogen-specific rabbit IgG

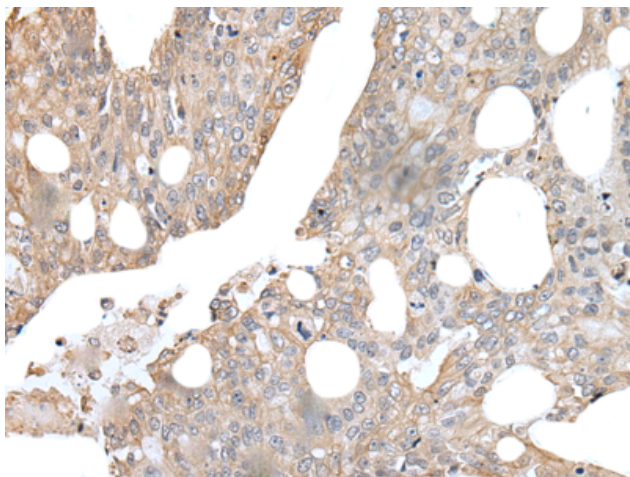
**Purification:** Antigen affinity purification

**Species Reactivity:** Human

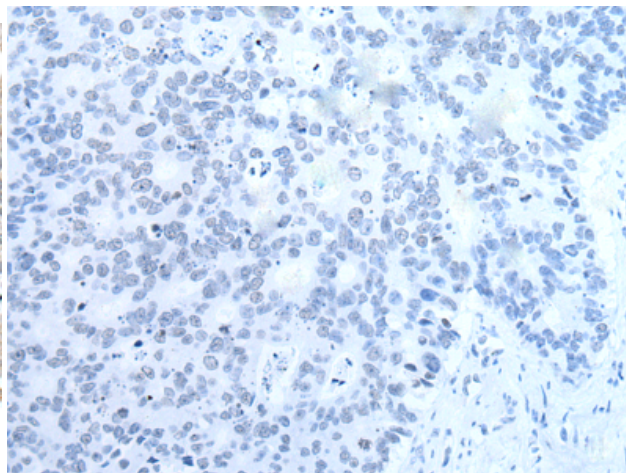
**Constituents:** PBS (without Mg<sup>2+</sup> and Ca<sup>2+</sup>), pH 7.4, 150 mM NaCl, 0.05% Sodium Azide and 40% glycerol

**Research Areas:** Metabolism, Cell Biology

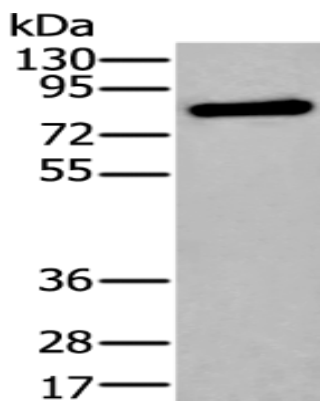
**Storage & Shipping:** Store at -20°C. Avoid repeated freezing and thawing



Immunohistochemistry analysis of paraffin embedded Human colorectal cancer tissue using 218274 (XPNPEP2 Antibody) at a dilution of 1/35 (Cell membrane).



In comparison with the IHC on the left, the same paraffin-embedded Human colorectal cancer tissue is first treated with the fusion protein and then with 218274 (Anti-XPNPEP2 Antibody) at dilution 1/35.



Gel: 8% SDS-PAGE, Lysate: 40  $\mu$ g;  
Lane: Human kidney tissue lysate;  
Primary antibody: 218274 (XPNPEP2 Antibody) at dilution 1/200;  
Secondary antibody: Goat anti rabbit IgG at 1/8000 dilution;  
Exposure time: 20 seconds