

## XPD RABBIT MAB

**Cat.#:** N263090

**Product Name:** Anti-XPD Rabbit Monoclonal Antibody

**Synonyms:** BTF2 p80; COFS2; CXPB; EM9; ERCC2; MAG; TFIIH p80; TTD; XPD; XPDC

**UNIPROT ID:** P18074

**Background:** ATP-dependent 5'-3' DNA helicase, component of the core-TFIIH basal transcription factor. Involved in nucleotide excision repair (NER) of DNA by opening DNA around the damage, and in RNA transcription by RNA polymerase II by anchoring the CDK-activating kinase (CAK) complex, composed of CDK7, cyclin H and MAT1, to the core-TFIIH complex. Involved in the regulation of vitamin-D receptor activity.

**Immunogen:** A synthetic peptide of human XPD

**Applications:** WB, ICC/IF

**Recommended Dilutions:** WB: 1/500-1/1000 IF: 1/50-1/200

**Host Species:** Rabbit

**Clonality:** Rabbit Monoclonal

**Clone ID:** R08-213

**MW:** Calculated MW: 87 kDa; Observed MW: 80 kDa

**Isotype:** IgG

**Purification:** Affinity Purified

**Species Reactivity:** Human

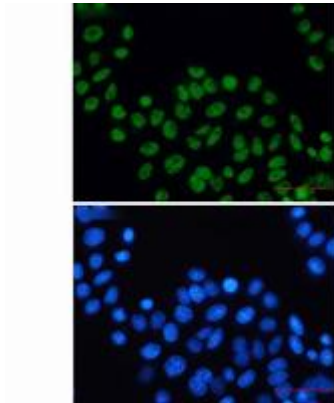
**Conjugation:** Unconjugated

**Modification:** Unmodified

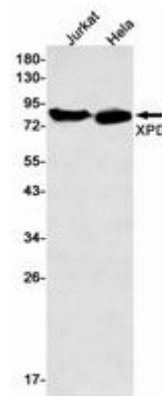
**Constituents:** PBS (without Mg<sup>2+</sup> and Ca<sup>2+</sup>), pH 7.3 containing 50% glycerol, 0.5% BSA and 0.02% sodium azide

**Research Areas:** Epigenetics and Nuclear Signaling

**Storage & Shipping:** Store at -20°C. Avoid repeated freezing and thawing



Immunocytochemistry analysis of XPD (green) in HeLa using XPD antibody, and DAPI (blue)



Western blot analysis of XPD in Jurkat, HeLa lysates using XPD antibody.