

## XKRX RABBIT PAB

**Cat.#:** S221150

**Product Name:** Anti-XKRX Rabbit Polyclonal Antibody

**Synonyms:** XKR2; XRG2; XPLAC

**UNIPROT ID:** Q6PP77 (Gene Accession - NP\_997724 )

**Background:** This gene encodes a protein that is related to a component of the XK/Kell complex of the Kell blood group system. The encoded protein includes several transmembrane domains, is known to be exposed to the cell surface, and may function as a membrane transporter.

**Immunogen:** Synthetic peptide of human XKRX

**Applications:** ELISA, WB, IHC

**Recommended Dilutions:** IHC: 25-100;WB: 500-2000;ELISA: 2000-5000

**Host Species:** Rabbit

**Clonality:** Rabbit Polyclonal

**Isotype:** Immunogen-specific rabbit IgG

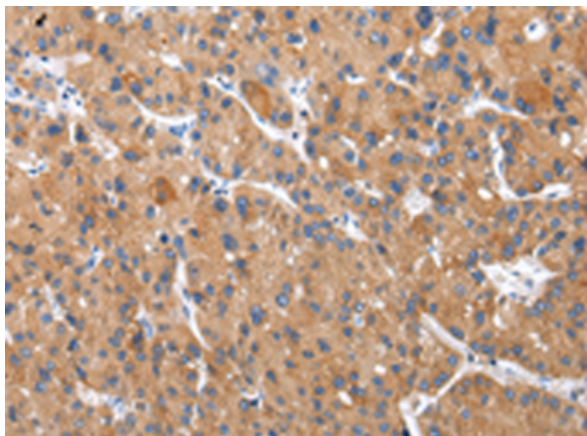
**Purification:** Antigen affinity purification

**Species Reactivity:** Human

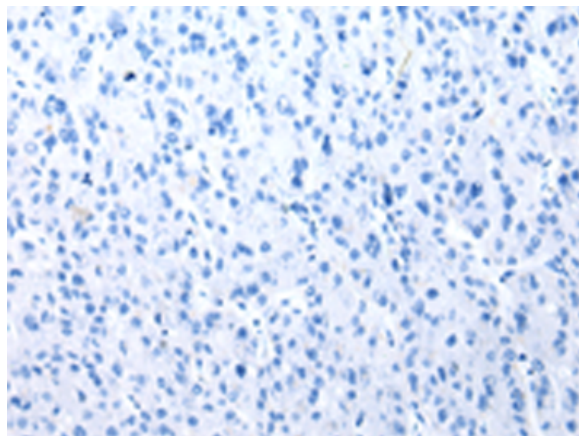
**Constituents:** PBS (without Mg<sup>2+</sup> and Ca<sup>2+</sup>), pH 7.4, 150 mM NaCl, 0.05% Sodium Azide and 40% glycerol

**Research Areas:** Neuroscience

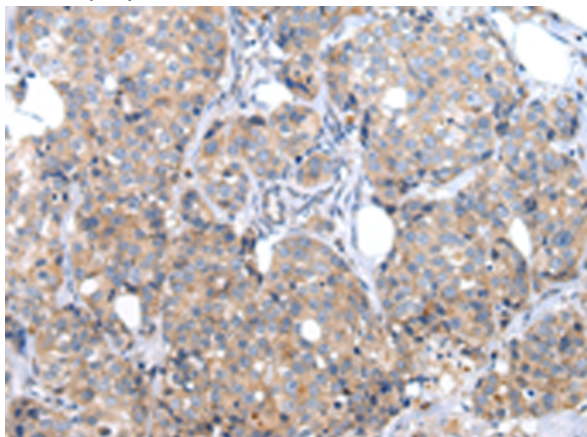
**Storage & Shipping:** Store at -20°C. Avoid repeated freezing and thawing



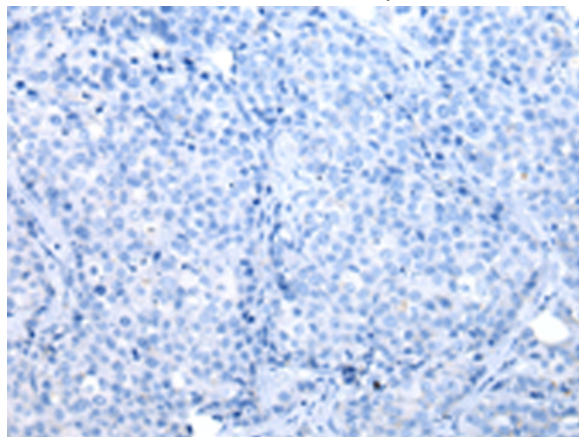
Immunohistochemistry analysis of paraffin embedded Human liver cancer tissue using 221150(XKRX Antibody) at a dilution of 1/30(Cytoplasm and Cell membrane).



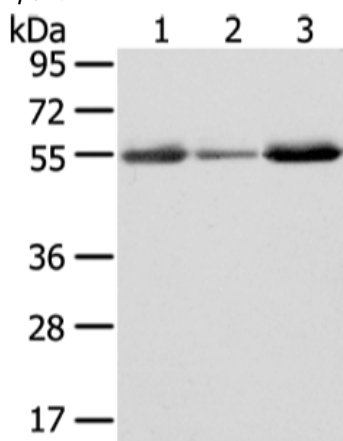
In comparison with the IHC on the left, the same paraffin-embedded Human liver cancer tissue is first treated with the synthetic peptide and then with 221150(Anti-XKRX Antibody) at dilution 1/30.



The image on the left is immunohistochemistry of paraffin-embedded Human breast cancer tissue using 221150(Anti-XKRX Antibody) at a dilution of 1/30.



In comparison with the IHC on the left, the same paraffin-embedded Human breast cancer tissue is first treated with synthetic peptide and then with D262625(Anti-XKRX Antibody) at dilution 1/30.



Gel: 8%SDS-PAGE, Lysate: 40 µg;  
 Lane 1-3: Human thyroid cancer and liver cancer tissue, human fetal intestines tissue;  
 Primary antibody: 221150(XKRX Antibody) at dilution 1/500;  
 Secondary antibody: Goat anti rabbit IgG at 1/8000 dilution;  
 Exposure time: 2 minutes



# Product Description

Pioneering GTPase and Oncogene Product Development since 2010

---