

XIRP1 RABBIT PAB

Cat.#: S221539

Product Name: Anti-XIRP1 Rabbit Polyclonal Antibody

Synonyms: Xin; CMYA1

UNIPROT ID: Q702N8 (Gene Accession - NP_919269)

Background: Protects actin filaments from depolymerization.

Immunogen: Synthetic peptide of human XIRP1

Applications: ELISA, IHC

Recommended Dilutions: IHC: 25-100; ELISA: 5000-10000

Host Species: Rabbit

Clonality: Rabbit Polyclonal

Isotype: Immunogen-specific rabbit IgG

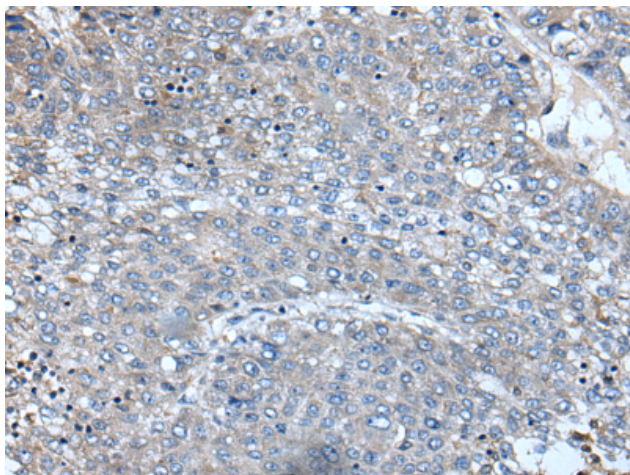
Purification: Antigen affinity purification

Species Reactivity: Human

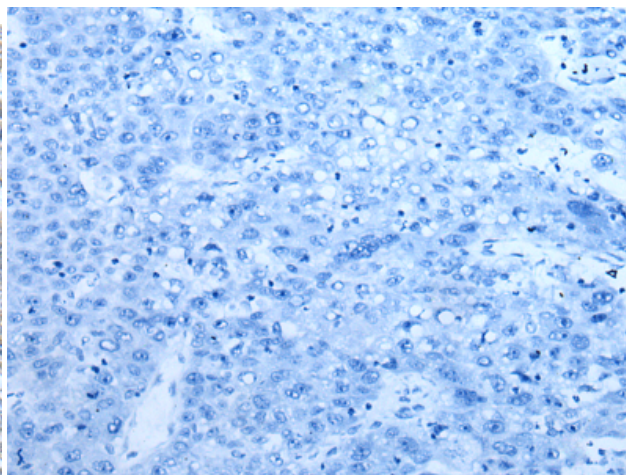
Constituents: PBS (without Mg²⁺ and Ca²⁺), pH 7.4, 150 mM NaCl, 0.05% Sodium Azide and 40% glycerol

Research Areas: Signal Transduction

Storage & Shipping: Store at -20°C. Avoid repeated freezing and thawing



Immunohistochemistry analysis of paraffin embedded Human liver cancer tissue using 221539(XIRP1 Antibody) at a dilution of 1/35(Cytoplasm).



In comparison with the IHC on the left, the same paraffin-embedded Human liver cancer tissue is first treated with the synthetic peptide and then with 221539(Anti-XIRP1 Antibody) at dilution 1/35.