

XBP1 RABBIT MAB

Cat.#: N263608

Product Name: Anti-XBP1 Rabbit Monoclonal Antibody

Synonyms: XBPI; TREB5; XBP2; X-box-binding protein 1; XBP-1; Tax-responsive element-binding protein 5

UNIPROT ID: P17861

Background: Acts during endoplasmic reticulum stress (ER) by activating unfolded protein response (UPR) target genes via direct binding to the UPR element (UPRE). Binds DNA preferably to the CRE-like element 5'-GATGACGTG[TG]N(3)[AT]T-3', and also to some TPA response elements (TRE). Binds to the HLA DR-alpha promoter. Binds to the Tax-responsive element (TRE) of HTLV-I.

Immunogen: Recombinant protein of human XBPI

Applications: WB,IP

Recommended Dilutions: WB: 1/500-1/1000 IP: 1/20

Host Species: Rabbit

Clonality: Rabbit Monoclonal

Clone ID: R04-3E2

MW: Calculated MW: 29 kDa; Observed MW: 29 kDa

Isotype: IgG

Purification: Affinity Purified

Species Reactivity: Human,Mouse

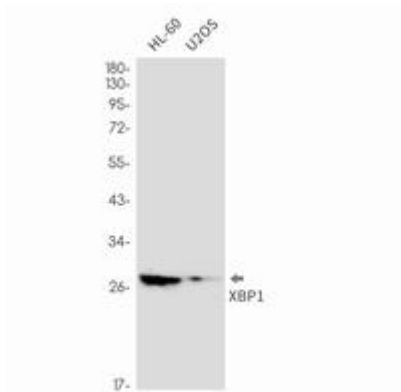
Conjugation: Unconjugated

Modification: Unmodified

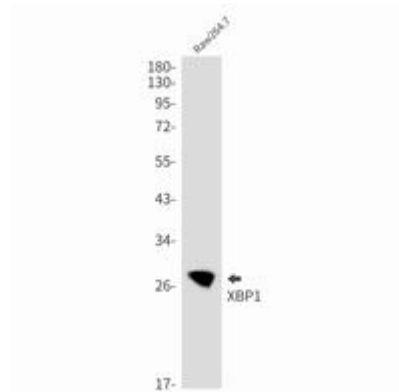
Constituents: PBS (without Mg²⁺ and Ca²⁺), pH 7.3 containing 50% glycerol, 0.5% BSA and 0.02% sodium azide

Research Areas: Epigenetics and Nuclear Signaling

Storage & Shipping: Store at -20°C. Avoid repeated freezing and thawing



Western blot analysis of XBPI in HL-60, U2OS lysates using XBPI antibody.



Western blot analysis of XBPI in Raw264.7 lysates using XBPI antibody.