

XAB2 RABBIT PAB

Cat.#: S218035

Product Name: Anti-XAB2 Rabbit Polyclonal Antibody

Synonyms: HCNP; HCRN; SYF1; NTC90

UNIPROT ID: Q9HCS7 (Gene Accession - BC007208)

Background: Involved in transcription-coupled repair (TCR), transcription and pre-mRNA splicing.

Immunogen: Fusion protein of human XAB2

Applications: ELISA, IHC

Recommended Dilutions: IHC: 20-100; ELISA: 2000-5000

Host Species: Rabbit

Clonality: Rabbit Polyclonal

Isotype: Immunogen-specific rabbit IgG

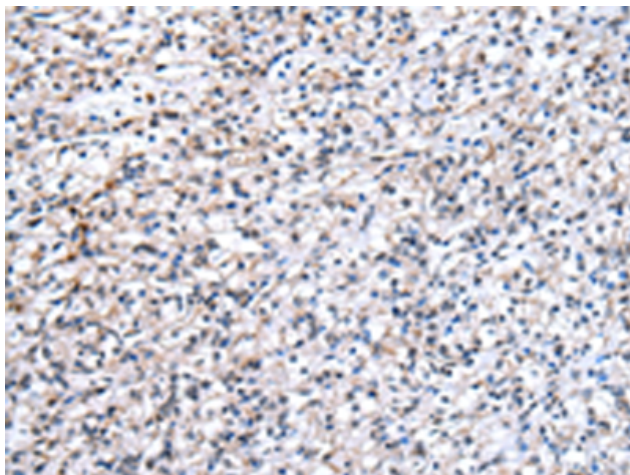
Purification: Antigen affinity purification

Species Reactivity: Human, Mouse, Rat

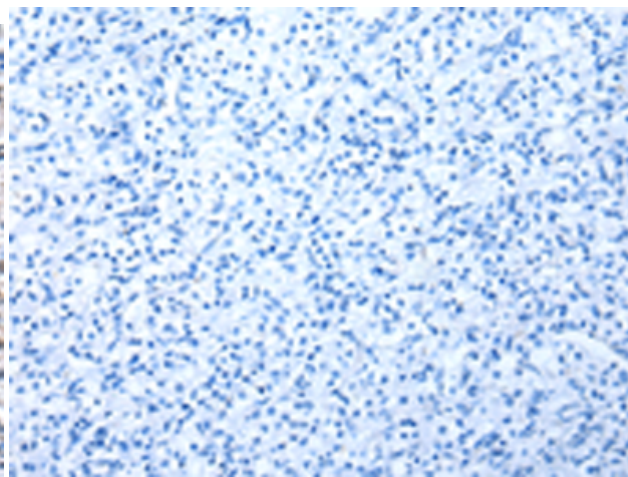
Constituents: PBS (without Mg²⁺ and Ca²⁺), pH 7.4, 150 mM NaCl, 0.05% Sodium Azide and 40% glycerol

Research Areas: Epigenetics and Nuclear Signaling

Storage & Shipping: Store at -20°C. Avoid repeated freezing and thawing



Immunohistochemistry analysis of paraffin embedded Human prostate cancer tissue using 218035(XAB2 Antibody) at a dilution of 1/25(Nucleus).



In comparison with the IHC on the left, the same paraffin-embedded Human prostate cancer tissue is first treated with the fusion protein and then with 218035(Anti-XAB2 Antibody) at dilution 1/25.