

WWTR1 RABBIT PAB

Cat.#: S218541

Product Name: Anti-WWTR1 Rabbit Polyclonal Antibody

Synonyms: TAZ

UNIPROT ID: Q9GZV5 (Gene Accession - BC014052)

Background: Enables transcription coactivator activity. Involved in several processes, including hippo signaling; positive regulation of cell differentiation; and regulation of signal transduction. Located in cytosol and nuclear body.

Immunogen: Fusion protein of human WWTR1

Applications: ELISA, WB, IHC

Recommended Dilutions: IHC: 50-200;WB: 1000-5000;ELISA: 5000-10000

Host Species: Rabbit

Clonality: Rabbit Polyclonal

Isotype: Immunogen-specific rabbit IgG

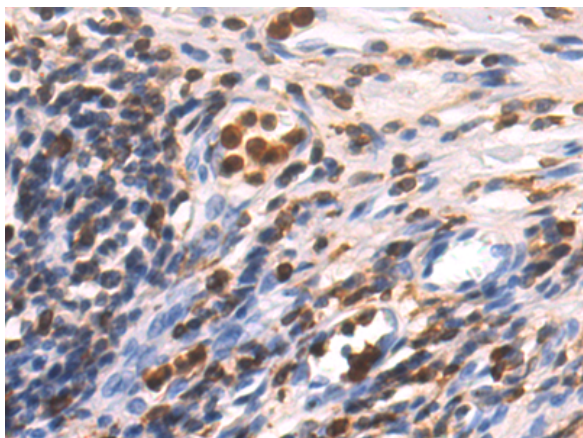
Purification: Antigen affinity purification

Species Reactivity: Human, Mouse

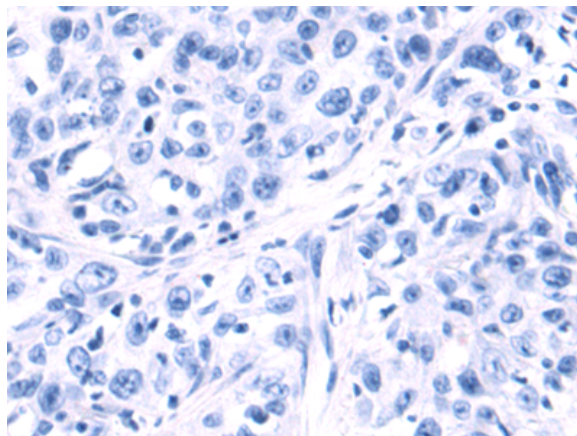
Constituents: PBS (without Mg²⁺ and Ca²⁺), pH 7.4, 150 mM NaCl, 0.05% Sodium Azide and 40% glycerol

Research Areas: Epigenetics and Nuclear Signaling, Stem Cells

Storage & Shipping: Store at -20°C. Avoid repeated freezing and thawing

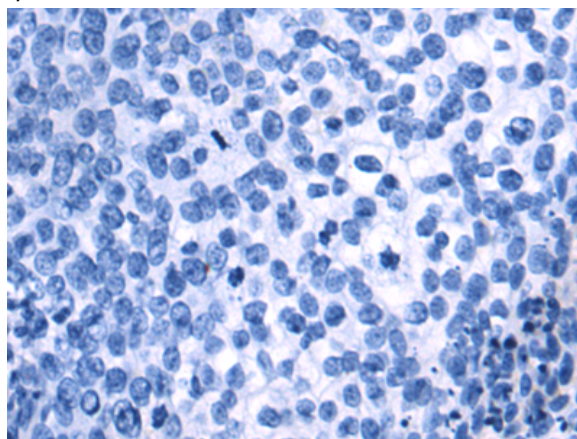


Immunohistochemistry analysis of paraffin embedded Human esophagus cancer tissue using 218541(WWTR1 Antibody) at a dilution of 1/80(Nucleus).

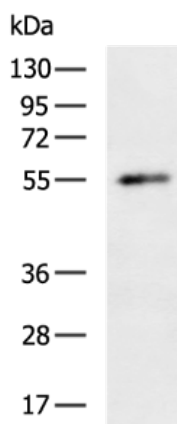


In comparison with the IHC on the left, the same paraffin-embedded Human esophagus cancer tissue is first treated with the fusion protein and then with 218541(Anti-WWTR1 Antibody) at dilution 1/80.

✘ The image on the left is immunohistochemistry of paraffin-embedded Human cervical cancer tissue using 218541(Anti-WWTR1 Antibody) at a dilution of 1/80.



In comparison with the IHC on the left, the same paraffin-embedded Human cervical cancer tissue is first treated with fusion protein and then with D224644(Anti-WWTR1 Antibody) at dilution 1/80.



Gel: 8%SDS-PAGE, Lysate: 40 µg;
 Lane: Mouse kidney tissue lysate;
 Primary antibody: 218541(WWTR1 Antibody) at dilution 1/1350;
 Secondary antibody: HRP-conjugated Goat anti rabbit IgG at 1/5000 dilution;
 Exposure time: 1 minute



Product Description

Pioneering GTPase and Oncogene Product Development since 2010
