

WWOX RABBIT MAB

Cat.#: N263607

Product Name: Anti-WWOX Rabbit Monoclonal Antibody

Synonyms: FOR; WOX1; EIEE28; FRA16D; SCAR12; HHCMA56; PRO0128; SDR41C1; D16S432E

UNIPROT ID: Q9NZC7

Background: Putative oxidoreductase.

Immunogen: Recombinant protein of human WWOX

Applications: WB,IHC-P,IP

Recommended Dilutions: WB: 1/500-1/1000 IHC: 1/50-1/100 IP: 1/20

Host Species: Rabbit

Clonality: Rabbit Monoclonal

Clone ID: R02-0E3

MW: Calculated MW: 47 kDa; Observed MW: 47 kDa

Isotype: IgG

Purification: Affinity Purified

Species Reactivity: Human,Mouse

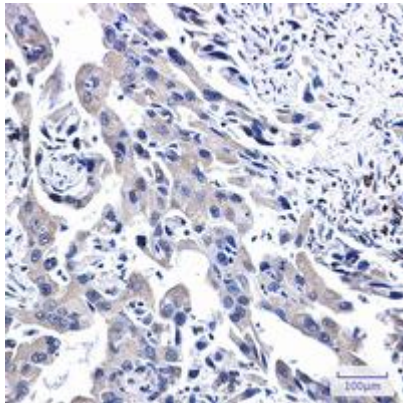
Conjugation: Unconjugated

Modification: Unmodified

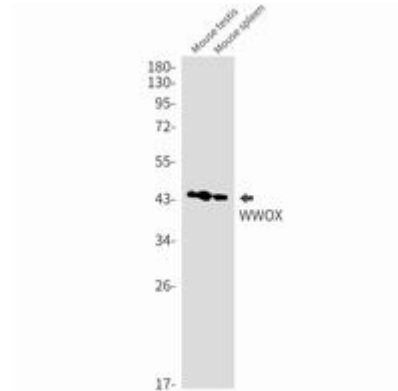
Constituents: PBS (without Mg²⁺ and Ca²⁺), pH 7.3 containing 50% glycerol, 0.5% BSA and 0.02% sodium azide

Research Areas: Cell Biology

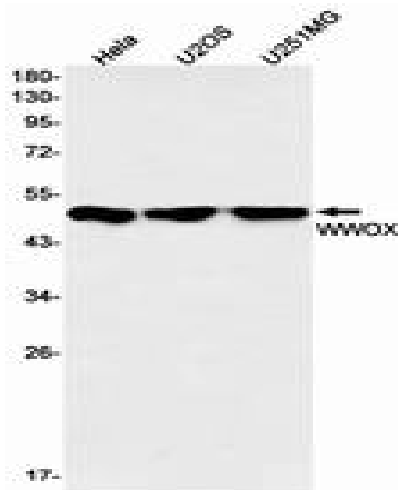
Storage & Shipping: Store at -20°C. Avoid repeated freezing and thawing



Immunohistochemistry analysis of paraffin-embedded Human lung cancer using WWOX antibody. High-pressure and temperature Sodium Citrate pH 6.0 was used for antigen retrieval.



Western blot analysis of WWOX in mouse testis, mouse spleen lysates using WWOX antibody.



Western blot analysis of WWOX in HeLa, U2OS, U251MG lysates using WWOX antibody.