

## WNT2B RABBIT PAB

**Cat.#:** S221137

**Product Name:** Anti-WNT2B Rabbit Polyclonal Antibody

**Synonyms:** WNT13

**UNIPROT ID:** Q93097 (Gene Accession - NP\_004176 )

**Background:** This gene encodes a member of the wingless-type MMTV integration site (WNT) family of highly conserved, secreted signaling factors. WNT family members function in a variety of developmental processes including regulation of cell growth and differentiation and are characterized by a WNT-core domain. This gene may play a role in human development as well as carcinogenesis. Alternative splicing results in multiple transcript variants. [provided by RefSeq, May 2014.]

**Immunogen:** Synthetic peptide of human WNT2B

**Applications:** ELISA, IHC

**Recommended Dilutions:** IHC: 50-100; ELISA: 1000-2000

**Host Species:** Rabbit

**Clonality:** Rabbit Polyclonal

**Isotype:** Immunogen-specific rabbit IgG

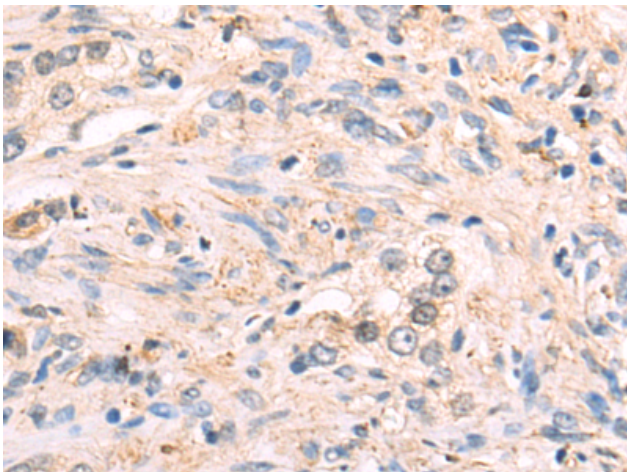
**Purification:** Antigen affinity purification

**Species Reactivity:** Human, Mouse

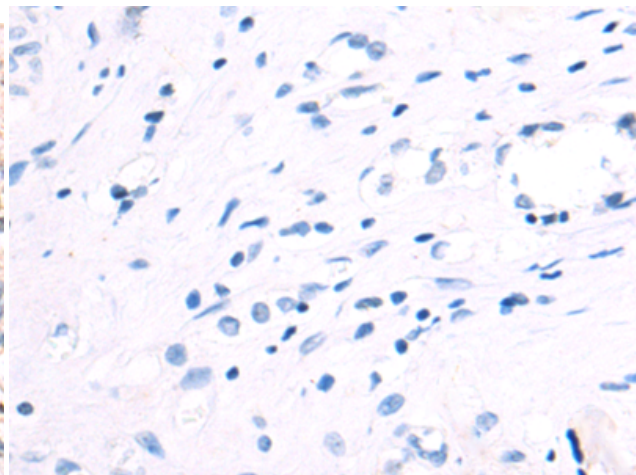
**Constituents:** PBS (without Mg<sup>2+</sup> and Ca<sup>2+</sup>), pH 7.4, 150 mM NaCl, 0.05% Sodium Azide and 40% glycerol

**Research Areas:** Cancer, Signal Transduction

**Storage & Shipping:** Store at -20°C. Avoid repeated freezing and thawing



Immunohistochemistry analysis of paraffin embedded Human prostate cancer tissue using 221137(WNT2B Antibody) at a dilution of 1/50(Secreted).



In comparison with the IHC on the left, the same paraffin-embedded Human prostate cancer tissue is first treated with the synthetic peptide and then with 221137(Anti-WNT2B Antibody) at dilution 1/50.