

WNT16 RABBIT MAB

Cat.#: N263083

Product Name: Anti-Wnt16 Rabbit Monoclonal Antibody

Synonyms: WNT16; Protein Wnt-16

UNIPROT ID: Q9UBV4

Background: Ligand for members of the frizzled family of seven transmembrane receptors. Probable developmental protein. May be a signaling molecule which affects the development of discrete regions of tissues. Is likely to signal over only few cell diameters .

Immunogen: A synthetic peptide of human Wnt16

Applications: WB,IP

Recommended Dilutions: WB: 1/500-1/1000 IP: 1/20

Host Species: Rabbit

Clonality: Rabbit Monoclonal

Clone ID: R08-2G2

MW: Calculated MW: 41 kDa; Observed MW: 41 kDa

Isotype: IgG

Purification: Affinity Purified

Species Reactivity: Human,Mouse,Rat

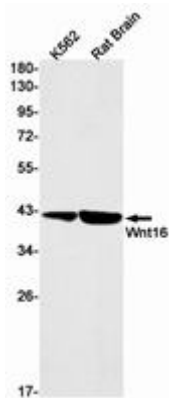
Conjugation: Unconjugated

Modification: Unmodified

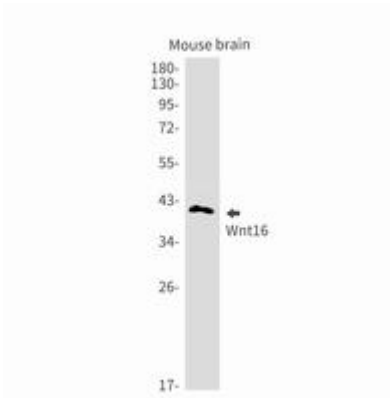
Constituents: PBS (without Mg²⁺ and Ca²⁺), pH 7.3 containing 50% glycerol, 0.5% BSA and 0.02% sodium azide

Research Areas: Stem Cells

Storage & Shipping: Store at -20°C. Avoid repeated freezing and thawing



Western blot analysis of Wnt16 in K562, rat Brain lysates using Wnt16 antibody.



Western blot analysis of Wnt16 in mouse brain lysates using Wnt16 antibody.