

WEE1 RABBIT PAB

Cat.#: S221545

Product Name: Anti-WEE1 Rabbit Polyclonal Antibody

Synonyms: WEE1A; WEE1hu

UNIPROT ID: P30291 (Gene Accession - NP_003381)

Background: This gene encodes a nuclear protein, which is a tyrosine kinase belonging to the Ser/Thr family of protein kinases. This protein catalyzes the inhibitory tyrosine phosphorylation of CDC2/cyclin B kinase, and appears to coordinate the transition between DNA replication and mitosis by protecting the nucleus from cytoplasmically activated CDC2 kinase.

Immunogen: Synthetic peptide of human WEE1

Applications: ELISA, IHC

Recommended Dilutions: IHC: 25-100; ELISA: 5000-10000

Host Species: Rabbit

Clonality: Rabbit Polyclonal

Isotype: Immunogen-specific rabbit IgG

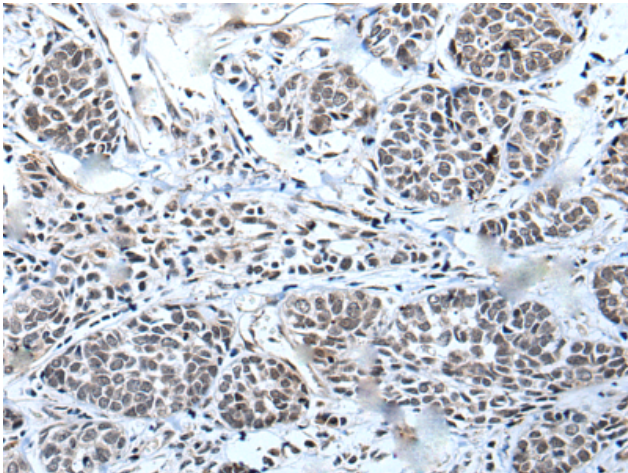
Purification: Antigen affinity purification

Species Reactivity: Human, Mouse, Rat

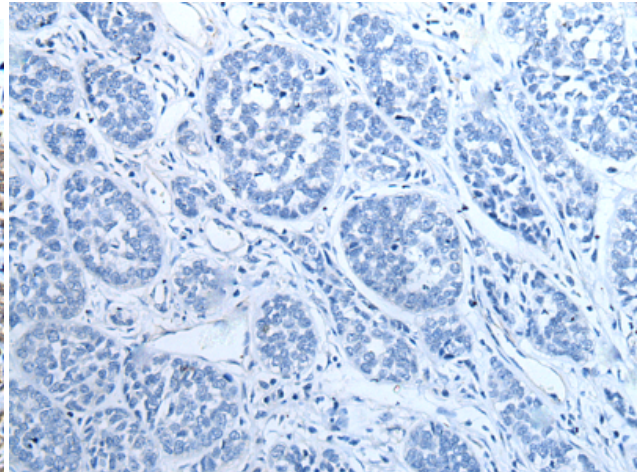
Constituents: PBS (without Mg²⁺ and Ca²⁺), pH 7.4, 150 mM NaCl, 0.05% Sodium Azide and 40% glycerol

Research Areas: Epigenetics and Nuclear Signaling, Cancer

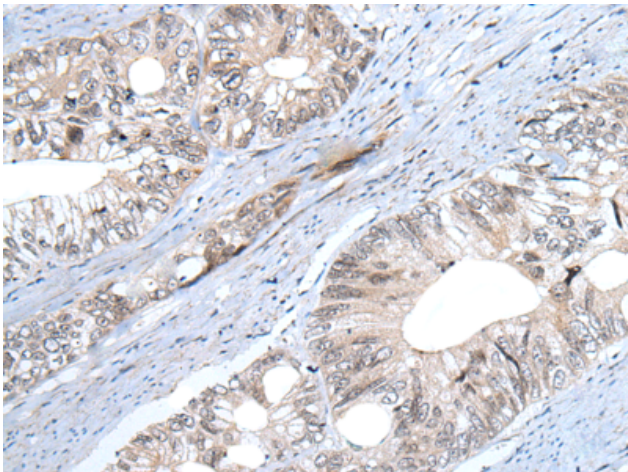
Storage & Shipping: Store at -20°C. Avoid repeated freezing and thawing



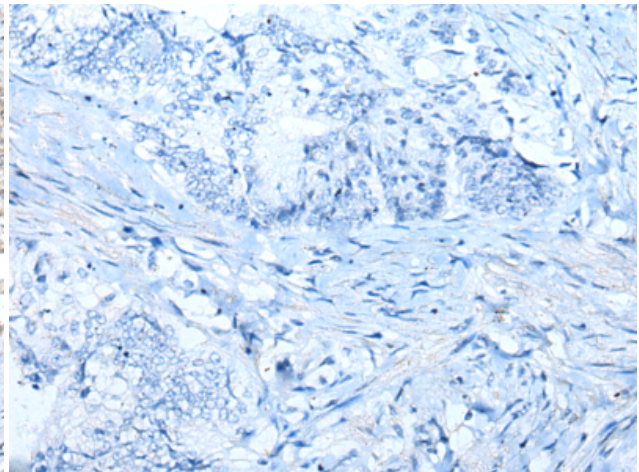
Immunohistochemistry analysis of paraffin embedded Human esophagus cancer tissue using 221545 (WEE1 Antibody) at a dilution of 1/25 (Nucleus).



In comparison with the IHC on the left, the same paraffin-embedded Human esophagus cancer tissue is first treated with the synthetic peptide and then with 221545 (Anti-WEE1 Antibody) at dilution 1/25.



The image on the left is immunohistochemistry of paraffin-embedded Human liver cancer tissue using 221545 (Anti-WEE1 Antibody) at a dilution of 1/25.



In comparison with the IHC on the left, the same paraffin-embedded Human liver cancer tissue is first treated with synthetic peptide and then with D263186 (Anti-WEE1 Antibody) at dilution 1/25.