

WDR76 RABBIT PAB

Cat.#: S219599

Product Name: Anti-WDR76 Rabbit Polyclonal Antibody

Synonyms: CMR1; CDW14

UNIPROT ID: Q9H967 (Gene Accession - BC051855)

Background: Enables enzyme binding activity. Involved in cellular response to DNA damage stimulus. Located in heterochromatin; nucleus; and site of DNA damage.

Immunogen: Fusion protein of human WDR76

Applications: ELISA, IHC

Recommended Dilutions: IHC: 50-200; ELISA: 5000-10000

Host Species: Rabbit

Clonality: Rabbit Polyclonal

Isotype: Immunogen-specific rabbit IgG

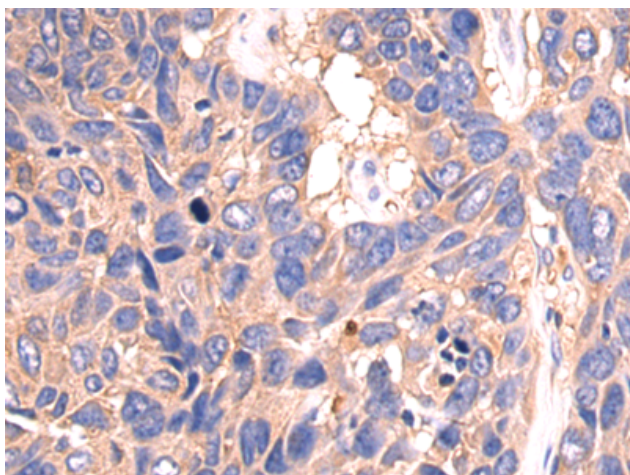
Purification: Antigen affinity purification

Species Reactivity: Human, Mouse

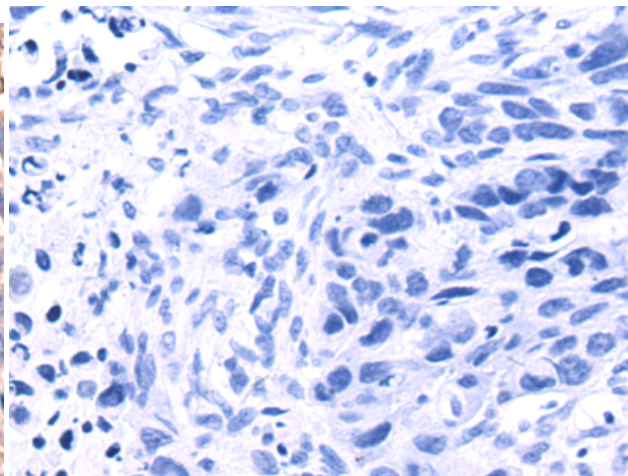
Constituents: PBS (without Mg²⁺ and Ca²⁺), pH 7.4, 150 mM NaCl, 0.05% Sodium Azide and 40% glycerol

Research Areas: Signal Transduction, Cell Biology

Storage & Shipping: Store at -20°C. Avoid repeated freezing and thawing



Immunohistochemistry analysis of paraffin embedded Human lung cancer tissue using 219599(WDR76 Antibody) at a dilution of 1/80(Cytoplasm).



In comparison with the IHC on the left, the same paraffin-embedded Human lung cancer tissue is first treated with the fusion protein and then with 219599(Anti-WDR76 Antibody) at dilution 1/80.