

WDR5 RABBIT PAB

Cat.#: N225917

Product Name: Anti-WDR5 Rabbit pAb

Synonyms: WDR5; BIG3; WD repeat-containing protein 5; BMP2-induced 3-kb gene protein

UNIPROT ID: P61964

Background: Contributes to histone modification. May position the N-terminus of histone H3 for efficient trimethylation at 'Lys-4'. As part of the MLL1/MLL complex it is involved in methylation and dimethylation at 'Lys-4' of histone H3. H3 'Lys-4' methylation represents a specific tag for epigenetic transcriptional activation.

Immunogen: A synthesized peptide derived from human WDR5

Applications: WB,IHC-P,FC

Recommended Dilutions: WB: 1/500-1/1000 IHC: 1/50-1/100 FC: 1/50-1/100

Host Species: Rabbit

Clonality: Rabbit Polyclonal

Clone ID: -

MW: Calculated MW: 37 kDa; Observed MW: 37 kDa

Isotype: IgG

Purification: Affinity Chromatography

Species Reactivity: Human,Mouse,Rat

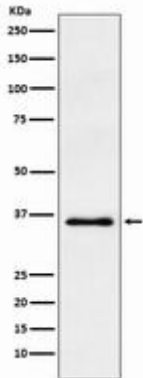
Conjugation: Unconjugated

Modification: Unmodified

Constituents: PBS (without Mg²⁺ and Ca²⁺), pH 7.3 containing 50% glycerol, 0.5% BSA and 0.02% sodium azide

Research Areas: Epigenetics and Nuclear Signaling

Storage & Shipping: Store at -20°C. Avoid repeated freezing and thawing



Western blot analysis of WDR5 in HeLa lysates using WDR5 antibody.