

WDR19 RABBIT PAB

Cat.#: S218023

Product Name: Anti-WDR19 Rabbit Polyclonal Antibody

Synonyms: ATD5; CED4; DYF-2; ORF26; Oseg6; PWDMP; SRTD5; IFT144; NPHP13

UNIPROT ID: Q8NEZ3 (Gene Accession - BC032578)

Background: This gene encodes a member of the WD repeat protein family. WD repeats are minimally conserved regions of approximately 40 amino acids typically bracketed by gly-his and trp-aspartic acid (GH-WD), which may facilitate formation of heterotrimeric or multiprotein complexes. Members of this family are involved in a variety of cellular processes, including cell cycle progression, signal transduction, apoptosis, and gene regulation. This protein contains six WD repeats, a clathrin heavy-chain repeat, and three transmembrane domains. This gene is conserved from *C. elegans* to human. It may participate in androgen-regulated signaling mechanisms or in the vesicular trafficking of androgen-regulated secretory processes. Alternatively spliced transcript variants encoding distinct isoforms have been reported but the full-length nature of one of these variants has not been defined.

Immunogen: Fusion protein of human WDR19

Applications: ELISA, IHC

Recommended Dilutions: IHC: 25-100; ELISA: 2000-5000

Host Species: Rabbit

Clonality: Rabbit Polyclonal

Isotype: Immunogen-specific rabbit IgG

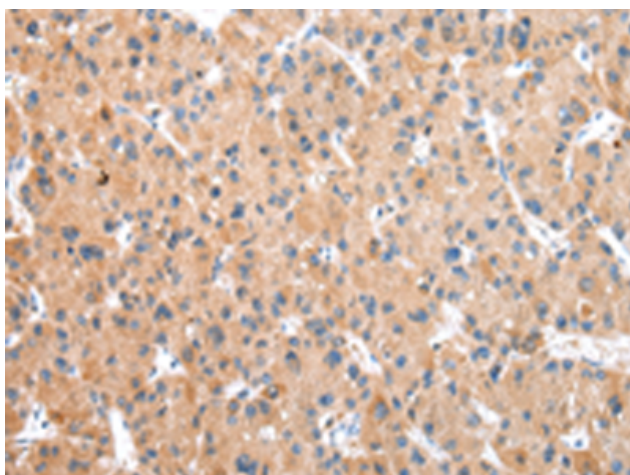
Purification: Antigen affinity purification

Species Reactivity: Human

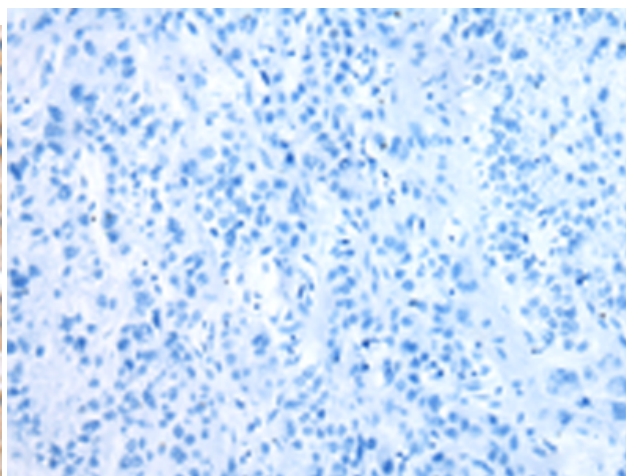
Constituents: PBS (without Mg²⁺ and Ca²⁺), pH 7.4, 150 mM NaCl, 0.05% Sodium Azide and 40% glycerol

Research Areas: Signal Transduction, Cancer

Storage & Shipping: Store at -20°C. Avoid repeated freezing and thawing



Immunohistochemistry analysis of paraffin embedded Human liver cancer tissue using 218023(WDR19 Antibody) at a dilution of 1/30(Cytoplasm).



In comparison with the IHC on the left, the same paraffin-embedded Human liver cancer tissue is first treated with the fusion protein and then with 218023(Anti-WDR19 Antibody) at dilution 1/30.



Product Description

Pioneering GTPase and Oncogene Product Development since 2010
