

WDHD1 RABBIT PAB

Cat.#: S221542

Product Name: Anti-WDHD1 Rabbit Polyclonal Antibody

Synonyms: AND1; CTF4; AND-1; CHTF4

UNIPROT ID: O75717 (Gene Accession - NP_009017)

Background: The protein encoded by this gene contains multiple N-terminal WD40 domains and a C-terminal high mobility group (HMG) box. WD40 domains are found in a variety of eukaryotic proteins and may function as adaptor/regulatory modules in signal transduction, pre-mRNA processing and cytoskeleton assembly. HMG boxes are found in many eukaryotic proteins involved in chromatin assembly, transcription and replication. Alternative splicing results in two transcript variants encoding different isoforms.

Immunogen: Synthetic peptide of human WDHD1

Applications: ELISA, IHC

Recommended Dilutions: IHC: 25-100; ELISA: 5000-10000

Host Species: Rabbit

Clonality: Rabbit Polyclonal

Isotype: Immunogen-specific rabbit IgG

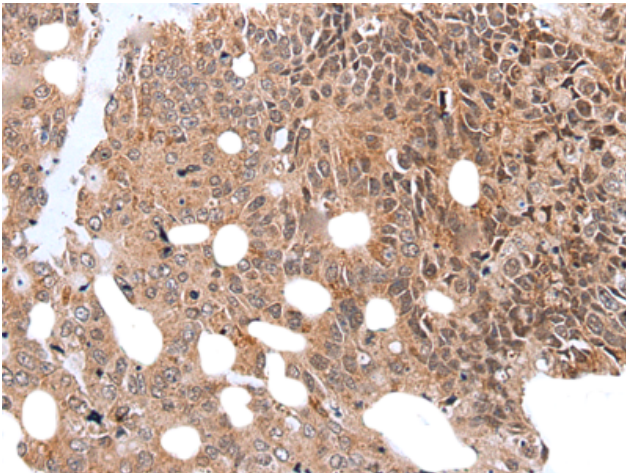
Purification: Antigen affinity purification

Species Reactivity: Human

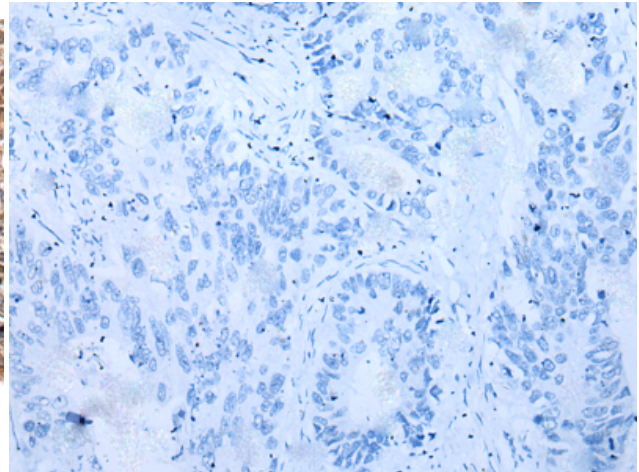
Constituents: PBS (without Mg²⁺ and Ca²⁺), pH 7.4, 150 mM NaCl, 0.05% Sodium Azide and 40% glycerol

Research Areas: Epigenetics and Nuclear Signaling

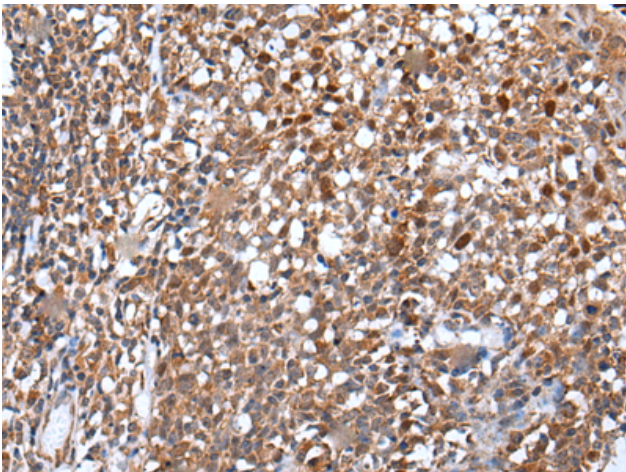
Storage & Shipping: Store at -20°C. Avoid repeated freezing and thawing



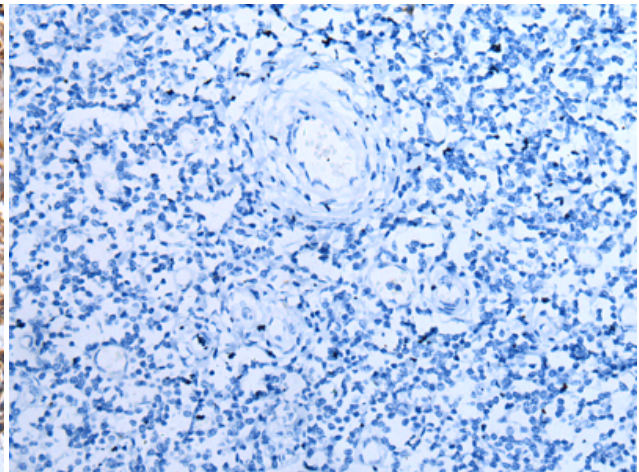
Immunohistochemistry analysis of paraffin embedded Human colorectal cancer tissue using 221542(WDHD1 Antibody) at a dilution of 1/35(Nucleus).



In comparison with the IHC on the left, the same paraffin-embedded Human colorectal cancer tissue is first treated with the synthetic peptide and then with 221542(Anti-WDHD1 Antibody) at dilution 1/35.



The image on the left is immunohistochemistry of paraffin-embedded Human tonsil tissue using 221542(Anti-WDHD1 Antibody) at a dilution of 1/35.



In comparison with the IHC on the left, the same paraffin-embedded Human tonsil tissue is first treated with synthetic peptide and then with D263183(Anti-WDHD1 Antibody) at dilution 1/35.