

## VWCE RABBIT PAB

**Cat.#:** S221110

**Product Name:** Anti-VWCE Rabbit Polyclonal Antibody

**Synonyms:** VWCI; URG11

**UNIPROT ID:** Q96DN2 (Gene Accession - NP\_689931 )

**Background:** May be a regulatory element in the beta-catenin signaling pathway and a target for chemoprevention of hepatocellular carcinoma.

**Immunogen:** Synthetic peptide of human VWCE

**Applications:** ELISA, IHC

**Recommended Dilutions:** IHC: 25-100; ELISA: 2000-5000

**Host Species:** Rabbit

**Clonality:** Rabbit Polyclonal

**Isotype:** Immunogen-specific rabbit IgG

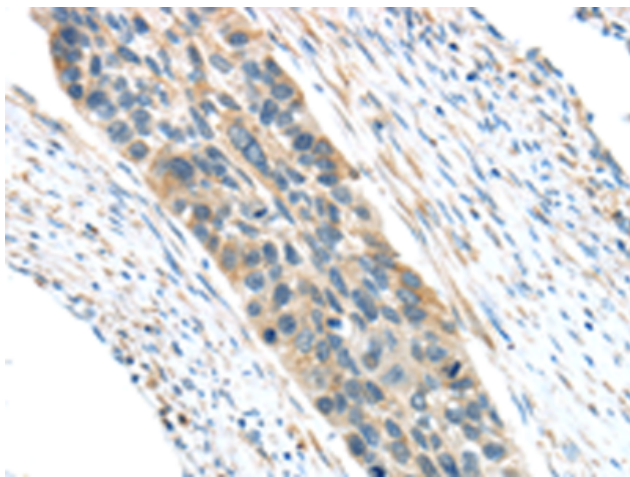
**Purification:** Antigen affinity purification

**Species Reactivity:** Human

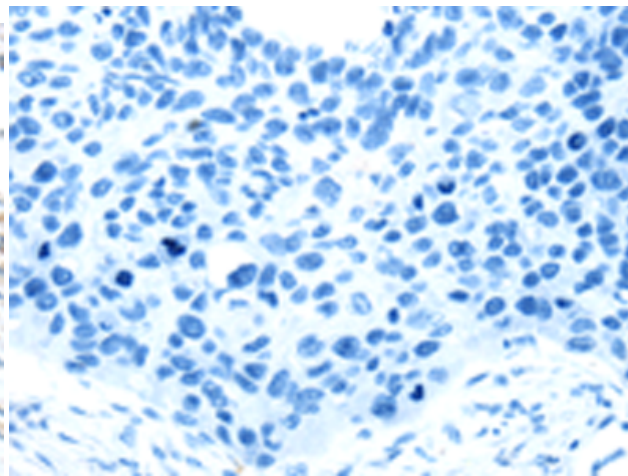
**Constituents:** PBS (without Mg<sup>2+</sup> and Ca<sup>2+</sup>), pH 7.4, 150 mM NaCl, 0.05% Sodium Azide and 40% glycerol

**Research Areas:** Cell Biology

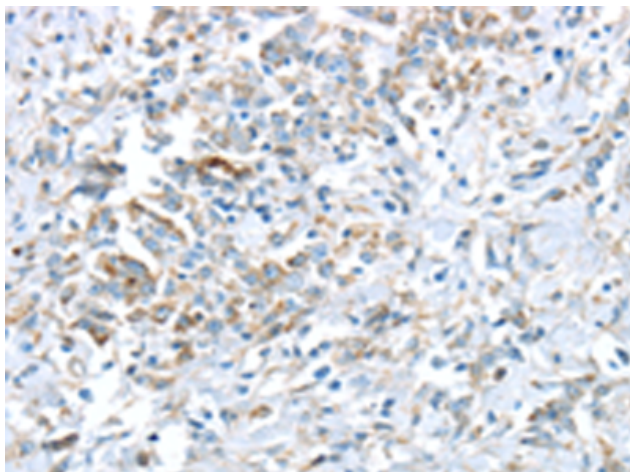
**Storage & Shipping:** Store at -20°C. Avoid repeated freezing and thawing



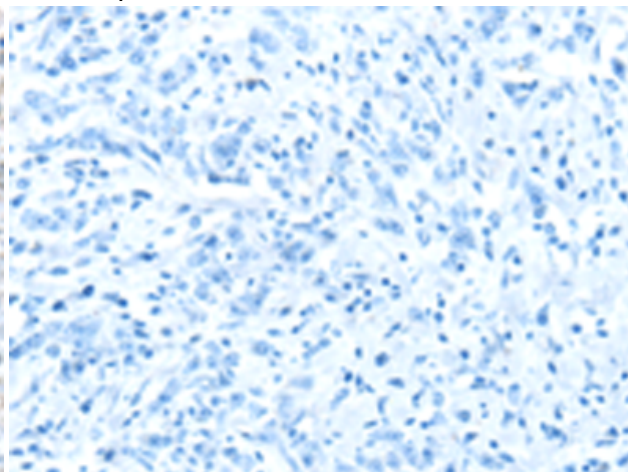
Immunohistochemistry analysis of paraffin embedded Human esophagus cancer tissue using 221110(VWCE Antibody) at a dilution of 1/30(Cytoplasm).



In comparison with the IHC on the left, the same paraffin-embedded Human esophagus cancer tissue is first treated with the synthetic peptide and then with 221110(Anti-VWCE Antibody) at dilution 1/30.



The image on the left is immunohistochemistry of paraffin-embedded Human gastric cancer tissue using 221110(Anti-VWCE Antibody) at a dilution of 1/30.



In comparison with the IHC on the left, the same paraffin-embedded Human gastric cancer tissue is first treated with synthetic peptide and then with D262486(Anti-VWCE Antibody) at dilution 1/30.