

VWA2 RABBIT PAB

Cat.#: S218298

Product Name: Anti-VWA2 Rabbit Polyclonal Antibody

Synonyms: AMACO; NET42; CCSP-2

UNIPROT ID: Q5GFL6 (Gene Accession - BC128588)

Background: This gene encodes a member of the von Willebrand factor A-like domain protein superfamily. The encoded protein is localized to the extracellular matrix and may serve as a structural component in basement membranes or in anchoring structures on scaffolds of collagen VII or fibrillin. This gene has been linked to type 1A diabetes and is a candidate serological marker for colon cancer.

Immunogen: Fusion protein of human VWA2

Applications: ELISA, IHC

Recommended Dilutions: IHC: 25-100; ELISA: 5000-10000

Host Species: Rabbit

Clonality: Rabbit Polyclonal

Isotype: Immunogen-specific rabbit IgG

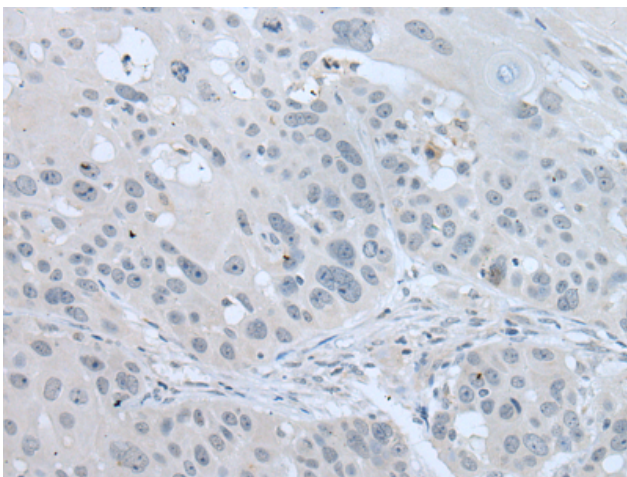
Purification: Antigen affinity purification

Species Reactivity: Human

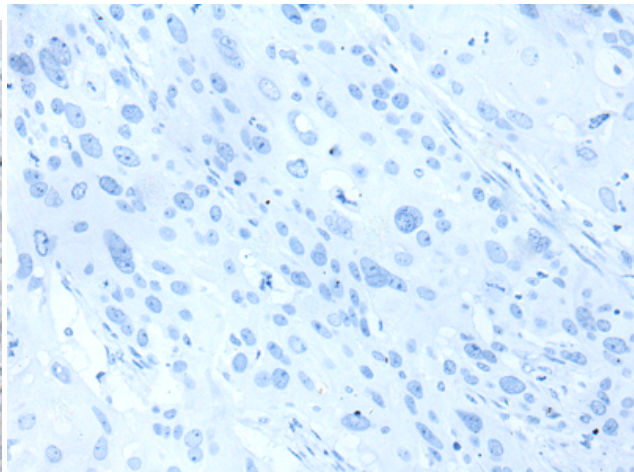
Constituents: PBS (without Mg²⁺ and Ca²⁺), pH 7.4, 150 mM NaCl, 0.05% Sodium Azide and 40% glycerol

Research Areas: Cancer

Storage & Shipping: Store at -20°C. Avoid repeated freezing and thawing



Immunohistochemistry analysis of paraffin embedded Human esophagus cancer tissue using 218298(VWA2 Antibody) at a dilution of 1/30(Cytoplasm).



In comparison with the IHC on the left, the same paraffin-embedded Human esophagus cancer tissue is first treated with the fusion protein and then with 218298(Anti-VWA2 Antibody) at dilution 1/30.