

## VSIG2 RABBIT PAB

**Cat.#:** N225224

**Product Name:** Anti-VSIG2 Rabbit pAb

**Synonyms:** V-set and immunoglobulin domain-containing protein 2; Cortical thymocyte-like protein; CT-like protein; CTH; CTXL; UNQ2770/PRO7154

**UNIPROT ID:** Q96IQ7

**Background:** Predicted to be located in membrane. Predicted to be integral component of plasma membrane.

**Immunogen:** Synthesized peptide derived from human CTXL. at AA range: 260-290

**Applications:** WB,ELISA

**Recommended Dilutions:** WB: 1/500-1/1000 ELISA: 1/10000

**Host Species:** Rabbit

**Clonality:** Rabbit Polyclonal

**Clone ID:** -

**MW:** Calculated MW: 34 kDa; Observed MW: 34 kDa

**Isotype:** IgG

**Purification:** Affinity Purified

**Species Reactivity:** Human

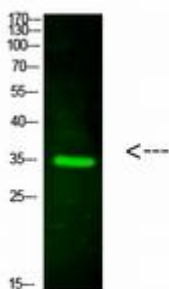
**Conjugation:** Unconjugated

**Modification:** Unmodified

**Constituents:** PBS (without Mg<sup>2+</sup> and Ca<sup>2+</sup>), pH 7.3 containing 50% glycerol, 0.5% BSA and 0.02% sodium azide

**Research Areas:** Cell Biology

**Storage & Shipping:** Store at -20°C. Avoid repeated freezing and thawing



Western blot analysis of VSIG2 in HeLa lysates using VSIG2 antibody.



# Product Description

Pioneering GTPase and Oncogene Product Development since 2010

---