

## VPS53 RABBIT PAB

**Cat.#:** S218009

**Product Name:** Anti-VPS53 Rabbit Polyclonal Antibody

**Synonyms:** HCCS1; PCH2E; hVps53L; pp13624

**UNIPROT ID:** Q5VIR6 (Gene Accession - BC006116 )

**Background:** This gene encodes a protein with sequence similarity to the yeast Vps53p protein. Vps53p is involved in retrograde vesicle trafficking in late Golgi.

**Immunogen:** Fusion protein of human VPS53

**Applications:** ELISA, WB, IHC

**Recommended Dilutions:** IHC: 25-100;WB: 200-1000;ELISA: 1000-2000

**Host Species:** Rabbit

**Clonality:** Rabbit Polyclonal

**Isotype:** Immunogen-specific rabbit IgG

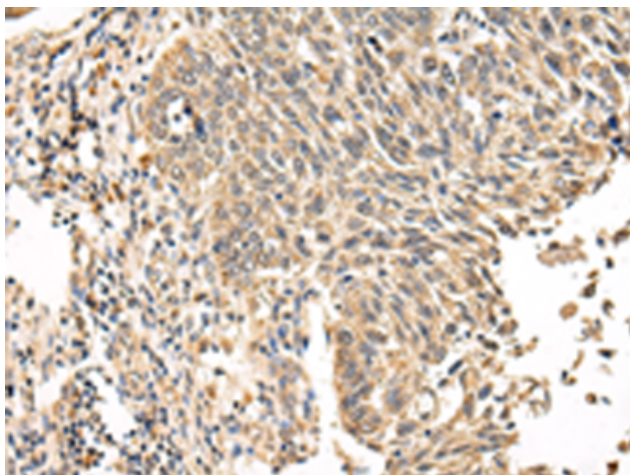
**Purification:** Antigen affinity purification

**Species Reactivity:** Human, Mouse

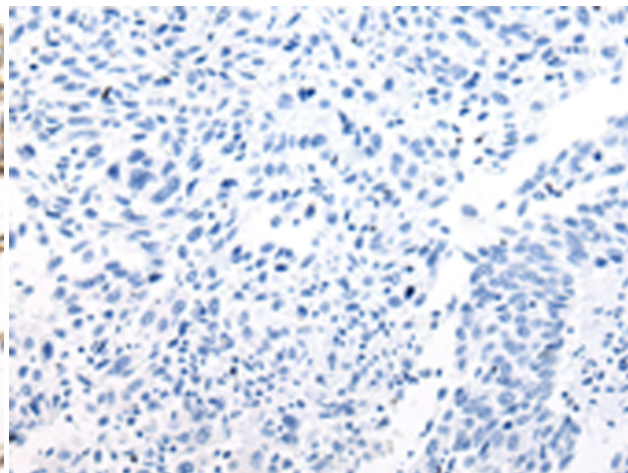
**Constituents:** PBS (without Mg<sup>2+</sup> and Ca<sup>2+</sup>), pH 7.4, 150 mM NaCl, 0.05% Sodium Azide and 40% glycerol

**Research Areas:** Signal Transduction, Epigenetics and Nuclear Signaling

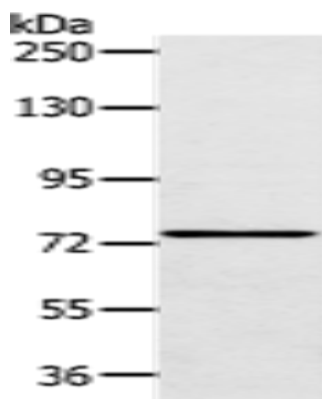
**Storage & Shipping:** Store at -20°C. Avoid repeated freezing and thawing



Immunohistochemistry analysis of paraffin embedded Human lung cancer tissue using 218009(VPS53 Antibody) at a dilution of 1/20(Cytoplasm).



In comparison with the IHC on the left, the same paraffin-embedded Human lung cancer tissue is first treated with the fusion protein and then with 218009(Anti-VPS53 Antibody) at dilution 1/20.



Gel: 6%SDS-PAGE, Lysate: 40  $\mu$ g;  
Lane: A172 cell;  
Primary antibody: 218009(VPS53 Antibody) at dilution 1/200;  
Secondary antibody: Goat anti rabbit IgG at 1/8000 dilution;  
Exposure time: 30 seconds