

## VPS51 RABBIT PAB

**Cat.#:** S215398

**Product Name:** Anti-VPS51 Rabbit Polyclonal Antibody

**Synonyms:** FFR; ANG2; ANG3; C11orf2; C11orf3

**UNIPROT ID:** Q9UID3 (Gene Accession - NP\_037397 )

**Background:** This gene encodes a member of the vacuolar protein sorting-associated protein 51 family. The encoded protein is a component of the Golgi-associated retrograde protein complex which acts as a tethering factor for carriers in retrograde transport from the early and late endosomes to the trans-Golgi network. Alternative splicing results in multiple transcript variants.

**Immunogen:** Synthetic peptide of human VPS51

**Applications:** ELISA, IHC

**Recommended Dilutions:** IHC: 40-200; ELISA: 5000-10000

**Host Species:** Rabbit

**Clonality:** Rabbit Polyclonal

**Isotype:** Immunogen-specific rabbit IgG

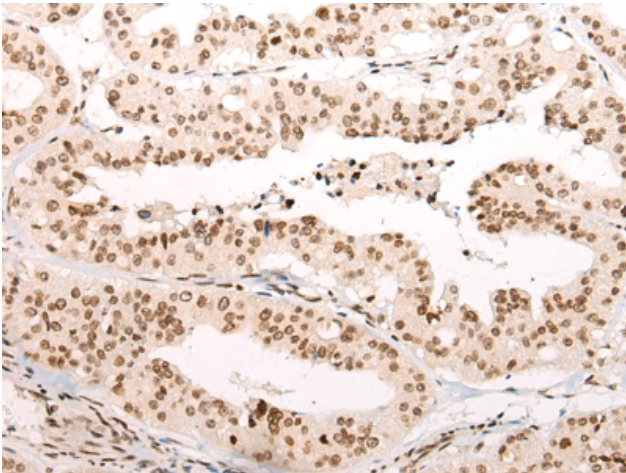
**Purification:** Antigen affinity purification

**Species Reactivity:** Human, Mouse

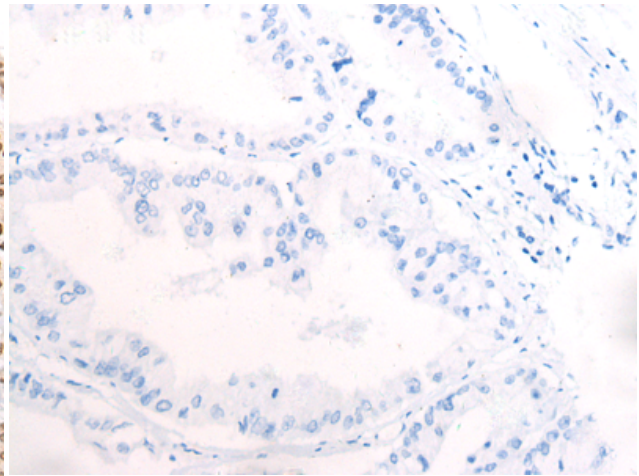
**Constituents:** PBS (without Mg<sup>2+</sup> and Ca<sup>2+</sup>), pH 7.4, 150 mM NaCl, 0.05% Sodium Azide and 40% glycerol

**Research Areas:** Signal Transduction

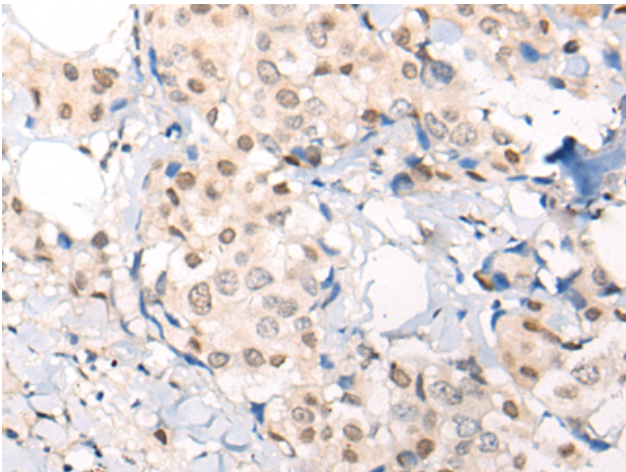
**Storage & Shipping:** Store at -20°C. Avoid repeated freezing and thawing



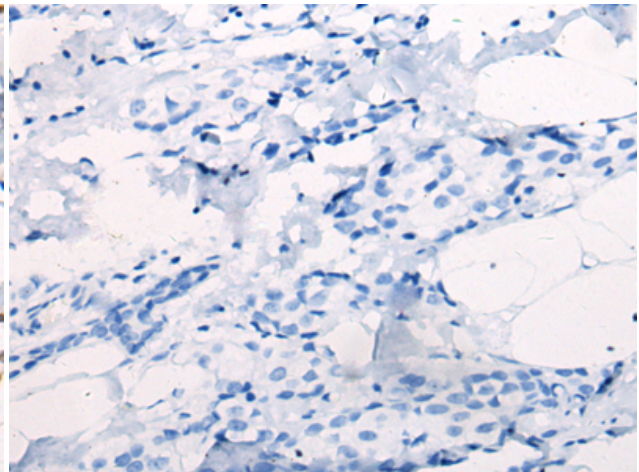
Immunohistochemistry analysis of paraffin embedded Human liver cancer tissue using 215398 (VPS51 Antibody) at a dilution of 1/65 (Nucleus).



In comparison with the IHC on the left, the same paraffin-embedded Human liver cancer tissue is first treated with the synthetic peptide and then with 215398 (Anti-VPS51 Antibody) at dilution 1/65.



The image on the left is immunohistochemistry of paraffin-embedded Human breast cancer tissue using 215398 (Anti-VPS51 Antibody) at a dilution of 1/65.



In comparison with the IHC on the left, the same paraffin-embedded Human breast cancer tissue is first treated with synthetic peptide and then with D163319 (Anti-VPS51 Antibody) at dilution 1/65.