

VPS4A RABBIT PAB

Cat.#: S221106

Product Name: Anti-VPS4A Rabbit Polyclonal Antibody

Synonyms: SKD1; SKD2; VPS4; SKD1A; VPS4-1

UNIPROT ID: Q9UN37 (Gene Accession - NP_037377)

Background: The protein encoded by this gene is a member of the AAA protein family (ATPases associated with diverse cellular activities), and is the homolog of the yeast Vps4 protein. In humans, two paralogs of the yeast protein have been identified. The former share a high degree of aa sequence similarity with each other, and also with yeast Vps4 and mouse Skd1 proteins. The mouse Skd1 (suppressor of K⁺ transport defect 1) has been shown to be really a yeast Vps4 ortholog. Functional studies indicate that both human paralogs associate with the endosomal compartments, and are involved in intracellular protein trafficking, similar to Vps4 protein in yeast. The gene encoding this paralog has been mapped to chromosome 16; the gene for the other resides on chromosome 18.

Immunogen: Synthetic peptide of human VPS4A

Applications: ELISA, WB, IHC

Recommended Dilutions: IHC: 50-100;WB: 500-2000;ELISA: 5000-10000

Host Species: Rabbit

Clonality: Rabbit Polyclonal

Isotype: Immunogen-specific rabbit IgG

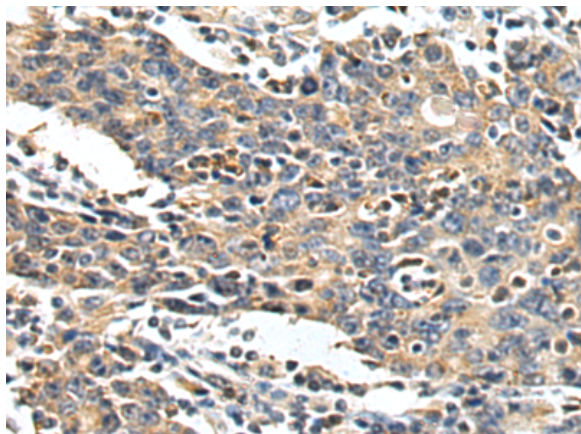
Purification: Antigen affinity purification

Species Reactivity: Human, Mouse, Rat

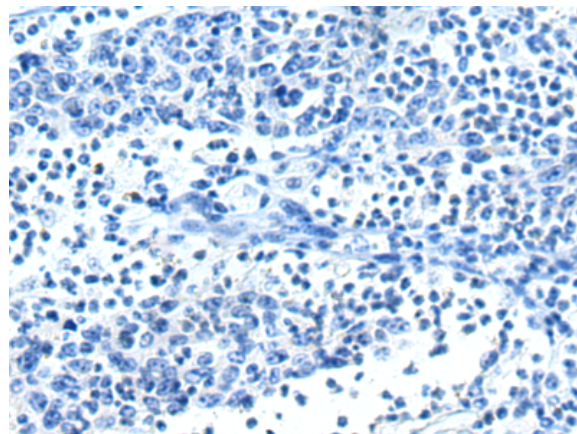
Constituents: PBS (without Mg²⁺ and Ca²⁺), pH 7.4, 150 mM NaCl, 0.05% Sodium Azide and 40% glycerol

Research Areas: Signal Transduction, Cancer

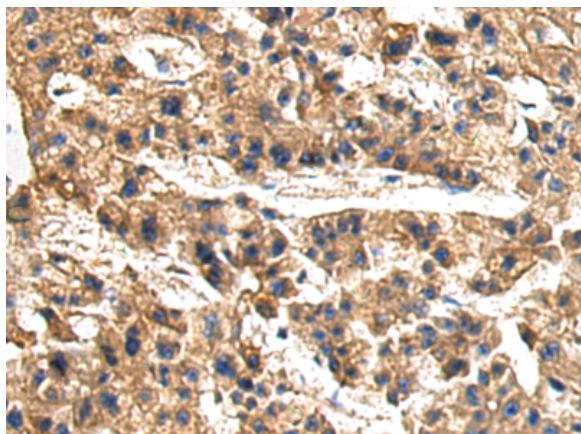
Storage & Shipping: Store at -20°C. Avoid repeated freezing and thawing



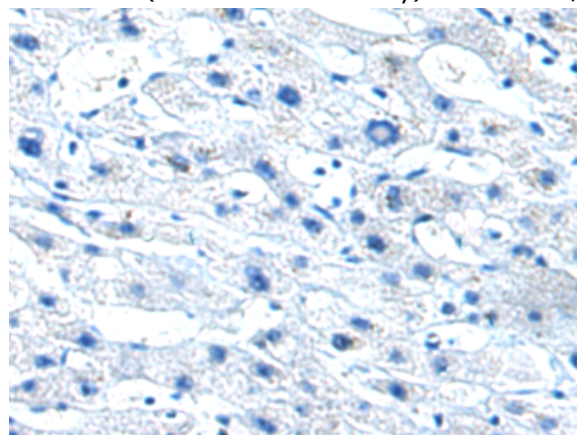
Immunohistochemistry analysis of paraffin embedded Human gastric cancer tissue using 221106(VPS4A Antibody) at a dilution of 1/25(Cytoplasm).



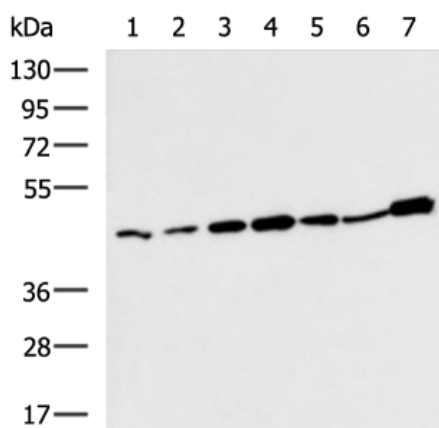
In comparison with the IHC on the left, the same paraffin-embedded Human gastric cancer tissue is first treated with the synthetic peptide and then with 221106(Anti-VPS4A Antibody) at dilution 1/25.



The image on the left is immunohistochemistry of paraffin-embedded Human prostate cancer tissue using 221106(Anti-VPS4A Antibody) at a dilution of 1/25.



In comparison with the IHC on the left, the same paraffin-embedded Human prostate cancer tissue is first treated with synthetic peptide and then with D262482(Anti-VPS4A Antibody) at dilution 1/25.



Gel: 8%SDS-PAGE, Lysate: 40 µg;
 Lane 1-7: MCF-7, HeLa, A172, 293T, HepG2 cell, Mouse skeletal muscle tissue, Mouse brain tissue lysates;
 Primary antibody: 221106(VPS4A Antibody) at dilution 1/400;
 Secondary antibody: HRP-conjugated Goat anti rabbit IgG at 1/5000 dilution;
 Exposure time: 1 minute



Product Description

Pioneering GTPase and Oncogene Product Development since 2010
