

VPS36 RABBIT PAB

Cat.#: S221568

Product Name: Anti-VPS36 Rabbit Polyclonal Antibody

Synonyms: EAP45; C13orf9; CGI-145

UNIPROT ID: Q86VN1 (Gene Accession - NP_057159)

Background: This gene encodes a protein that is a subunit of the endosomal sorting complex required for transport II (ESCRT-II). This protein complex functions in sorting of ubiquitinated membrane proteins during endocytosis. A similar protein complex in rat is associated with RNA polymerase elongation factor II.

Immunogen: Synthetic peptide of human VPS36

Applications: ELISA, WB, IHC

Recommended Dilutions: IHC: 50-200;WB: 500-2000;ELISA: 5000-10000

Host Species: Rabbit

Clonality: Rabbit Polyclonal

Isotype: Immunogen-specific rabbit IgG

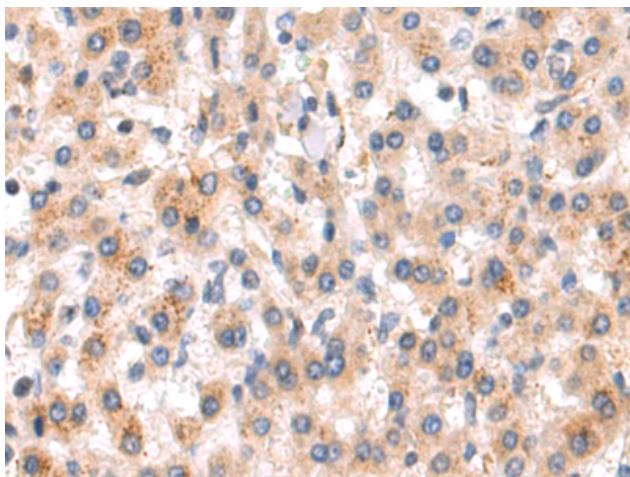
Purification: Antigen affinity purification

Species Reactivity: Human, Mouse, Rat

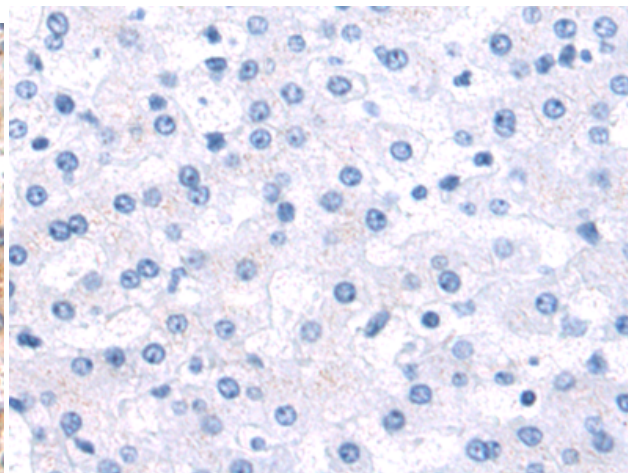
Constituents: PBS (without Mg²⁺ and Ca²⁺), pH 7.4, 150 mM NaCl, 0.05% Sodium Azide and 40% glycerol

Research Areas: Signal Transduction, Cell Biology

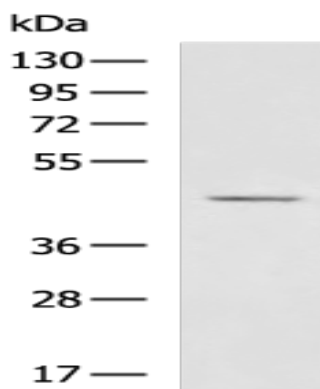
Storage & Shipping: Store at -20°C. Avoid repeated freezing and thawing



Immunohistochemistry analysis of paraffin embedded Human liver cancer tissue using 221568(VPS36 Antibody) at a dilution of 1/50(Cytoplasm).



In comparison with the IHC on the left, the same paraffin-embedded Human liver cancer tissue is first treated with the synthetic peptide and then with 221568(Anti-VPS36 Antibody) at dilution 1/50.



Gel: 8%SDS-PAGE, Lysate: 40 μ g;
Lane: Human tonsil tissue lysate;
Primary antibody: 221568(VPS36 Antibody) at dilution 1/900;
Secondary antibody: HRP-conjugated Goat anti rabbit IgG at 1/5000 dilution;
Exposure time: 15 seconds